





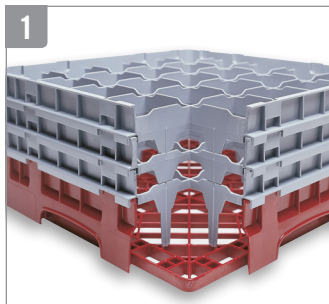
# CAMRACK® 4-IN-1 WAREWASHING SYSTEM



The Camrack System will protect glassware and keep it clean until the next event, eliminating the need for rewashing.

Camrack Cover Seals from the Top and Camdolly® Seals from the Bottom.

## Efficient Washing



Open inside compartments provide thorough circulation of water and cleaning solutions and promote quick and thorough drying.

Long-lasting polypropylene Camracks are built to withstand chemicals and high temperatures up to 200°F (93°C).

## Sanitary Storage



Closed outer walls keep fingers and contaminants out and reduce risk of breakage and injury. The Camrack Cover and Camdolly make this system completely enclosed. Glassware stays clean in storage, eliminating rewashing.

## Inventory Control



A variety of base rack colors help identify at a glance both contents and quantity per rack. Available in 10 colors.

## Safe, Sanitary Transportation



Camracks can be transported across large campuses or to off-site locations in one single unit.

Easy to grip handles and smooth overlapping sides facilitate safe handling.



Camracks interstack with racks from major manufacturers.



Content labeling options include one-color custom hot stamping or pre-printed clips.



Camracks are covered by one or more of the following patents: Full Base Dish Rack D 412,607. Half Base Dish Rack D 404,176. Half Dish Rack Extender D 400,321. Enlarged Dish Rack Extender D 399,614. Dish Rack with Extender 5,934,486 Utility Patent. Pronged Base Dish Rack D 403,472.

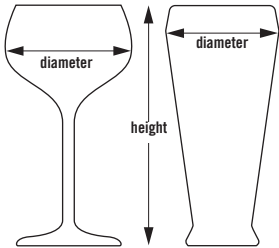
# FULL SIZE CAMRACKS® FOR STEMWARE & TUMBLERS



These racks offer complete protection for all your delicate and valuable stemware and tumblers, from washing and handling to stacking, storing and transporting.

**Choose the correct dishrack:**

- 1. Measure the maximum diameter of your glass (stemware or tumbler) to determine the number of compartments.
- 2. Measure the maximum height of your glass (stemware or tumbler) to the top edge of the rim to determine the compartment height.



25S534

**5<sup>7</sup>/<sub>8</sub>"** 5.875" (14,9 cm)  
MAXIMUM DIAMETER



**9 COMPARTMENT**

| MAXIMUM HEIGHT  | 3 <sup>5</sup> / <sub>8</sub> "<br>3.625" (9,2 cm)   | 5 <sup>1</sup> / <sub>4</sub> "<br>5.25" (13,3 cm)   | 6 <sup>7</sup> / <sub>8</sub> "<br>6.875" (17,4 cm)  | 8 <sup>1</sup> / <sub>2</sub> "<br>8.5" (21,5 cm)   | 10 <sup>1</sup> / <sub>8</sub> "<br>10.125" (25,7 cm)   | 11 <sup>3</sup> / <sub>4</sub> "<br>11.75" (29,8 cm)  |
|-----------------|--|--|--|---|---|---|
| CODE            | 9S318  | 9S434  | 9S638  | 9S800   | 9S958   | 9S1114  |
| CASE PACK       | 5  | 4  | 3  | 2   | 2   | 2   |
| RACK DIMENSION  | 19 <sup>3</sup> / <sub>4</sub> " x 19 <sup>3</sup> / <sub>4</sub> " x 5 <sup>5</sup> / <sub>8</sub> "<br>50 x 50 x 14,3 cm | 19 <sup>3</sup> / <sub>4</sub> " x 19 <sup>3</sup> / <sub>4</sub> " x 7 <sup>1</sup> / <sub>4</sub> "<br>50 x 50 x 18,4 cm | 19 <sup>3</sup> / <sub>4</sub> " x 19 <sup>3</sup> / <sub>4</sub> " x 8 <sup>7</sup> / <sub>8</sub> "<br>50 x 50 x 22,5 cm | 19 <sup>3</sup> / <sub>4</sub> " x 19 <sup>3</sup> / <sub>4</sub> " x 10 <sup>1</sup> / <sub>2</sub> "<br>50 x 50 x 26,7 cm | 19 <sup>3</sup> / <sub>4</sub> " x 19 <sup>3</sup> / <sub>4</sub> " x 12 <sup>5</sup> / <sub>8</sub> "<br>50 x 50 x 30,8 cm | 19 <sup>3</sup> / <sub>4</sub> " x 19 <sup>3</sup> / <sub>4</sub> " x 13 <sup>3</sup> / <sub>4</sub> "<br>50 x 50 x 34,9 cm |
| LIST PRICE EACH | \$ 82.75   | \$ 107.00  | \$ 129.25  | \$ 147.75   | \$ 171.00   | \$ 199.00   |

**4<sup>3</sup>/<sub>8</sub>"** 4.375" (11,11 cm)  
MAXIMUM DIAMETER



**16 COMPARTMENT**

| MAXIMUM HEIGHT  | 3 <sup>5</sup> / <sub>8</sub> "<br>3.625" (9,2 cm)  | 4 <sup>1</sup> / <sub>2</sub> "<br>4.5" (11,4 cm)   | 5 <sup>1</sup> / <sub>4</sub> "<br>5.25" (13,3 cm)  | 6 <sup>1</sup> / <sub>8</sub> "<br>6.125" (15,5 cm)   | 6 <sup>7</sup> / <sub>8</sub> "<br>6.875" (17,4 cm)   | 7 <sup>3</sup> / <sub>4</sub> "<br>7.75" (19,6 cm)  |
|-----------------|---|---|---|---|---|---|
| CODE            | 16S318  | 16S418**  | 16S434  | 16S534**  | 16S638  | 16S738**  |
| CASE PACK       | 5   | 5   | 4   | 4   | 3   | 3   |
| RACK DIMENSION  | 19 <sup>3</sup> / <sub>4</sub> " x 19 <sup>3</sup> / <sub>4</sub> " x 5 <sup>5</sup> / <sub>8</sub> "<br>50 x 50 x 14,3 cm  | 19 <sup>3</sup> / <sub>4</sub> " x 19 <sup>3</sup> / <sub>4</sub> " x 5 <sup>5</sup> / <sub>8</sub> "<br>50 x 50 x 14,3 cm  | 19 <sup>3</sup> / <sub>4</sub> " x 19 <sup>3</sup> / <sub>4</sub> " x 7 <sup>1</sup> / <sub>4</sub> "<br>50 x 50 x 18,4 cm  | 19 <sup>3</sup> / <sub>4</sub> " x 19 <sup>3</sup> / <sub>4</sub> " x 7 <sup>1</sup> / <sub>4</sub> "<br>50 x 50 x 18,4 cm  | 19 <sup>3</sup> / <sub>4</sub> " x 19 <sup>3</sup> / <sub>4</sub> " x 8 <sup>7</sup> / <sub>8</sub> "<br>50 x 50 x 22,5 cm  | 19 <sup>3</sup> / <sub>4</sub> " x 19 <sup>3</sup> / <sub>4</sub> " x 8 <sup>7</sup> / <sub>8</sub> "<br>50 x 50 x 22,5 cm  |
| LIST PRICE EACH | \$ 78.00  | \$ 81.50  | \$ 102.00   | \$ 104.50   | \$ 122.75   | \$ 125.00   |
| MAXIMUM HEIGHT  | 8 <sup>1</sup> / <sub>2</sub> "<br>8.5" (21,5 cm)   | 9 <sup>3</sup> / <sub>8</sub> "<br>9.375" (23,8 cm)   | 10 <sup>1</sup> / <sub>8</sub> "<br>10.125" (25,7 cm)   | 11"<br>11" (27,9 cm)  | 11 <sup>3</sup> / <sub>4</sub> "<br>11.75" (29,8 cm)  | 12 <sup>5</sup> / <sub>8</sub> "<br>12.625" (32 cm)   |
| CODE            | 16S800  | 16S900**  | 16S958  | 16S1058**   | 16S1114   | 16S1214**   |
| CASE PACK       | 2   | 2   | 2   | 2   | 2   | 2   |
| RACK DIMENSION  | 19 <sup>3</sup> / <sub>4</sub> " x 19 <sup>3</sup> / <sub>4</sub> " x 10 <sup>1</sup> / <sub>2</sub> "<br>50 x 50 x 26,7 cm | 19 <sup>3</sup> / <sub>4</sub> " x 19 <sup>3</sup> / <sub>4</sub> " x 10 <sup>1</sup> / <sub>2</sub> "<br>50 x 50 x 26,7 cm | 19 <sup>3</sup> / <sub>4</sub> " x 19 <sup>3</sup> / <sub>4</sub> " x 12 <sup>5</sup> / <sub>8</sub> "<br>50 x 50 x 30,8 cm | 19 <sup>3</sup> / <sub>4</sub> " x 19 <sup>3</sup> / <sub>4</sub> " x 12 <sup>5</sup> / <sub>8</sub> "<br>50 x 50 x 30,8 cm | 19 <sup>3</sup> / <sub>4</sub> " x 19 <sup>3</sup> / <sub>4</sub> " x 13 <sup>3</sup> / <sub>4</sub> "<br>50 x 50 x 34,9 cm | 19 <sup>3</sup> / <sub>4</sub> " x 19 <sup>3</sup> / <sub>4</sub> " x 13 <sup>3</sup> / <sub>4</sub> "<br>50 x 50 x 34,9 cm |
| LIST PRICE EACH | \$ 148.75   | \$ 151.00   | \$ 171.00   | \$ 173.00   | \$ 199.00   | \$ 201.00   |

**Base Rack Colors:**



**Extender Color:** Soft Gray (151). \*\*Compartment Extenders cannot be added. Personalization available. See Camrack personalization and color coding page. Contact Customer Service for all special orders.

# FULL SIZE CAMRACKS® FOR STEMWARE & TUMBLERS



**3<sup>7</sup>/<sub>8</sub>"** 3.875" (9,84 cm)  
MAXIMUM DIAMETER



## 20 COMPARTMENT

| MAXIMUM HEIGHT  | 3 <sup>5</sup> / <sub>8</sub> "<br>3.625" (9,2 cm)   | 5 <sup>1</sup> / <sub>4</sub> "<br>5.25" (13,3 cm)   | 6 <sup>7</sup> / <sub>8</sub> "<br>6.875" (17,4 cm)  | 8 <sup>1</sup> / <sub>2</sub> "<br>8.5" (21,5 cm)   | 10 <sup>1</sup> / <sub>8</sub> "<br>10.125" (25,7 cm)   | 11 <sup>3</sup> / <sub>4</sub> "<br>11.75" (29,8 cm)  |
|-----------------|--|--|--|---|---|---|
| CODE            | 20S318   | 20S434   | 20S638   | 20S800  | 20S958  | 20S1114   |
| CASE PACK       | 5  | 4  | 3  | 2   | 2   | 2   |
| RACK DIMENSION  | 19 <sup>3</sup> / <sub>4</sub> " x 19 <sup>3</sup> / <sub>4</sub> " x 5 <sup>3</sup> / <sub>4</sub> "<br>50 x 50 x 14,3 cm | 19 <sup>3</sup> / <sub>4</sub> " x 19 <sup>3</sup> / <sub>4</sub> " x 7 <sup>1</sup> / <sub>4</sub> "<br>50 x 50 x 18,4 cm | 19 <sup>3</sup> / <sub>4</sub> " x 19 <sup>3</sup> / <sub>4</sub> " x 8 <sup>3</sup> / <sub>8</sub> "<br>50 x 50 x 22,5 cm | 19 <sup>3</sup> / <sub>4</sub> " x 19 <sup>3</sup> / <sub>4</sub> " x 10 <sup>1</sup> / <sub>2</sub> "<br>50 x 50 x 26,7 cm | 19 <sup>3</sup> / <sub>4</sub> " x 19 <sup>3</sup> / <sub>4</sub> " x 12 <sup>3</sup> / <sub>4</sub> "<br>50 x 50 x 30,8 cm | 19 <sup>3</sup> / <sub>4</sub> " x 19 <sup>3</sup> / <sub>4</sub> " x 13 <sup>3</sup> / <sub>4</sub> "<br>50 x 50 x 34,9 cm |
| LIST PRICE EACH | \$ 78.00   | \$ 103.25  | \$ 123.75  | \$ 148.75   | \$ 171.00   | \$ 199.00   |

**3<sup>7</sup>/<sub>16</sub>"** 3.44" (8,7 cm)  
MAXIMUM DIAMETER



## 25 COMPARTMENT

| MAXIMUM HEIGHT  | 3 <sup>5</sup> / <sub>8</sub> "<br>3.625" (9,2 cm)  | 4 <sup>1</sup> / <sub>2</sub> "<br>4.5" (11,4 cm)   | 5 <sup>1</sup> / <sub>4</sub> "<br>5.25" (13,3 cm)  | 6 <sup>1</sup> / <sub>8</sub> "<br>6.125" (15,5 cm)   | 6 <sup>7</sup> / <sub>8</sub> "<br>6.875" (17,4 cm)   | 7 <sup>3</sup> / <sub>4</sub> "<br>7.75" (19,6 cm)  |
|-----------------|---|---|---|---|---|---|
| CODE            | 25S318  | 25S418**  | 25S434  | 25S534**  | 25S638  | 25S738**  |
| CASE PACK       | 5   | 5   | 4   | 4   | 3   | 3   |
| RACK DIMENSION  | 19 <sup>3</sup> / <sub>4</sub> " x 19 <sup>3</sup> / <sub>4</sub> " x 5 <sup>3</sup> / <sub>4</sub> "<br>50 x 50 x 14,3 cm  | 19 <sup>3</sup> / <sub>4</sub> " x 19 <sup>3</sup> / <sub>4</sub> " x 5 <sup>3</sup> / <sub>4</sub> "<br>50 x 50 x 14,3 cm  | 19 <sup>3</sup> / <sub>4</sub> " x 19 <sup>3</sup> / <sub>4</sub> " x 7 <sup>1</sup> / <sub>4</sub> "<br>50 x 50 x 18,4 cm  | 19 <sup>3</sup> / <sub>4</sub> " x 19 <sup>3</sup> / <sub>4</sub> " x 7 <sup>1</sup> / <sub>4</sub> "<br>50 x 50 x 18,4 cm  | 19 <sup>3</sup> / <sub>4</sub> " x 19 <sup>3</sup> / <sub>4</sub> " x 8 <sup>3</sup> / <sub>8</sub> "<br>50 x 50 x 22,5 cm  | 19 <sup>3</sup> / <sub>4</sub> " x 19 <sup>3</sup> / <sub>4</sub> " x 8 <sup>3</sup> / <sub>8</sub> "<br>50 x 50 x 22,5 cm  |
| LIST PRICE EACH | \$ 78.00  | \$ 84.25  | \$ 103.25   | \$ 108.50   | \$ 123.75   | \$ 133.50   |
| MAXIMUM HEIGHT  | 8 <sup>1</sup> / <sub>2</sub> "<br>8.5" (21,5 cm)   | 9 <sup>3</sup> / <sub>8</sub> "<br>9.375" (23,8 cm)   | 10 <sup>1</sup> / <sub>8</sub> "<br>10.125" (25,7 cm)   | 11"<br>11" (27,9 cm)  | 11 <sup>3</sup> / <sub>4</sub> "<br>11.75" (29,8 cm)  | 12 <sup>5</sup> / <sub>8</sub> "<br>12.625" (32 cm)   |
| CODE            | 25S800  | 25S900**  | 25S958  | 25S1058**   | 25S1114   | 25S1214**   |
| CASE PACK       | 2   | 2   | 2   | 2   | 2   | 2   |
| RACK DIMENSION  | 19 <sup>3</sup> / <sub>4</sub> " x 19 <sup>3</sup> / <sub>4</sub> " x 10 <sup>1</sup> / <sub>2</sub> "<br>50 x 50 x 26,7 cm | 19 <sup>3</sup> / <sub>4</sub> " x 19 <sup>3</sup> / <sub>4</sub> " x 10 <sup>1</sup> / <sub>2</sub> "<br>50 x 50 x 26,7 cm | 19 <sup>3</sup> / <sub>4</sub> " x 19 <sup>3</sup> / <sub>4</sub> " x 12 <sup>3</sup> / <sub>4</sub> "<br>50 x 50 x 30,8 cm | 19 <sup>3</sup> / <sub>4</sub> " x 19 <sup>3</sup> / <sub>4</sub> " x 12 <sup>3</sup> / <sub>4</sub> "<br>50 x 50 x 30,8 cm | 19 <sup>3</sup> / <sub>4</sub> " x 19 <sup>3</sup> / <sub>4</sub> " x 13 <sup>3</sup> / <sub>4</sub> "<br>50 x 50 x 34,9 cm | 19 <sup>3</sup> / <sub>4</sub> " x 19 <sup>3</sup> / <sub>4</sub> " x 13 <sup>3</sup> / <sub>4</sub> "<br>50 x 50 x 34,9 cm |
| LIST PRICE EACH | \$ 148.75   | \$ 161.00   | \$ 171.00   | \$ 186.00   | \$ 199.00   | \$ 214.00   |

\*\*Compartment Extenders cannot be added.

**3<sup>1</sup>/<sub>8</sub>"** 3.125" (7,94 cm)  
MAXIMUM DIAMETER



## 30 COMPARTMENT

| MAXIMUM HEIGHT  | 3 <sup>5</sup> / <sub>8</sub> "<br>3.625" (9,2 cm)   | 5 <sup>1</sup> / <sub>4</sub> "<br>5.25" (13,3 cm)   | 6 <sup>7</sup> / <sub>8</sub> "<br>6.875" (17,4 cm)  | 8 <sup>1</sup> / <sub>2</sub> "<br>8.5" (21,5 cm)   | 10 <sup>1</sup> / <sub>8</sub> "<br>10.125" (25,7 cm)   | 11 <sup>3</sup> / <sub>4</sub> "<br>11.75" (29,8 cm)  |
|-----------------|--|--|--|---|---|---|
| CODE            | 30S318   | 30S434   | 30S638   | 30S800  | 30S958  | 30S1114   |
| CASE PACK       | 5  | 4  | 3  | 2   | 2   | 2   |
| RACK DIMENSION  | 19 <sup>3</sup> / <sub>4</sub> " x 19 <sup>3</sup> / <sub>4</sub> " x 5 <sup>3</sup> / <sub>4</sub> "<br>50 x 50 x 14,3 cm | 19 <sup>3</sup> / <sub>4</sub> " x 19 <sup>3</sup> / <sub>4</sub> " x 7 <sup>1</sup> / <sub>4</sub> "<br>50 x 50 x 18,4 cm | 19 <sup>3</sup> / <sub>4</sub> " x 19 <sup>3</sup> / <sub>4</sub> " x 8 <sup>3</sup> / <sub>8</sub> "<br>50 x 50 x 22,5 cm | 19 <sup>3</sup> / <sub>4</sub> " x 19 <sup>3</sup> / <sub>4</sub> " x 10 <sup>1</sup> / <sub>2</sub> "<br>50 x 50 x 26,7 cm | 19 <sup>3</sup> / <sub>4</sub> " x 19 <sup>3</sup> / <sub>4</sub> " x 12 <sup>3</sup> / <sub>4</sub> "<br>50 x 50 x 30,8 cm | 19 <sup>3</sup> / <sub>4</sub> " x 19 <sup>3</sup> / <sub>4</sub> " x 13 <sup>3</sup> / <sub>4</sub> "<br>50 x 50 x 34,9 cm |
| LIST PRICE EACH | \$ 81.50   | \$ 104.50  | \$ 126.00  | \$ 151.00   | \$ 162.00   | \$ 199.00   |



# FULL SIZE CAMRACKS® FOR STEMWARE & TUMBLERS



**2<sup>7</sup>/<sub>8</sub>"** 2.875" (7,3 cm)  
MAXIMUM DIAMETER



## 36 COMPARTMENT

| MAXIMUM HEIGHT  | 3 <sup>5</sup> / <sub>8</sub> "<br>3.625" (9,2 cm)  | 4 <sup>1</sup> / <sub>2</sub> "<br>4.5" (11,4 cm)   | 5 <sup>1</sup> / <sub>4</sub> "<br>5.25" (13,3 cm)  | 6 <sup>1</sup> / <sub>8</sub> "<br>6.125" (15,5 cm)   | 6 <sup>7</sup> / <sub>8</sub> "<br>6.875" (17,4 cm)   | 7 <sup>3</sup> / <sub>4</sub> "<br>7.75" (19,6 cm)  |
|-----------------|---|---|---|---|---|---|
| CODE            | 36S318  | 36S418**  | 36S434  | 36S534**  | 36S638  | 36S738**  |
| CASE PACK       | 5   | 5   | 4   | 4   | 3   | 3   |
| RACK DIMENSION  | 19 <sup>3</sup> / <sub>4</sub> " x 19 <sup>3</sup> / <sub>4</sub> " x 5 <sup>5</sup> / <sub>8</sub> "<br>50 x 50 x 14,3 cm  | 19 <sup>3</sup> / <sub>4</sub> " x 19 <sup>3</sup> / <sub>4</sub> " x 5 <sup>5</sup> / <sub>8</sub> "<br>50 x 50 x 14,3 cm  | 19 <sup>3</sup> / <sub>4</sub> " x 19 <sup>3</sup> / <sub>4</sub> " x 7 <sup>1</sup> / <sub>4</sub> "<br>50 x 50 x 18,4 cm  | 19 <sup>3</sup> / <sub>4</sub> " x 19 <sup>3</sup> / <sub>4</sub> " x 7 <sup>1</sup> / <sub>4</sub> "<br>50 x 50 x 18,4 cm  | 19 <sup>3</sup> / <sub>4</sub> " x 19 <sup>3</sup> / <sub>4</sub> " x 8 <sup>5</sup> / <sub>8</sub> "<br>50 x 50 x 22,5 cm  | 19 <sup>3</sup> / <sub>4</sub> " x 19 <sup>3</sup> / <sub>4</sub> " x 8 <sup>5</sup> / <sub>8</sub> "<br>50 x 50 x 22,5 cm  |
| LIST PRICE EACH | \$ 81.50  | \$ 88.00  | \$ 104.50   | \$ 113.50   | \$ 126.00   | \$ 140.00   |
| MAXIMUM HEIGHT  | 8 <sup>1</sup> / <sub>2</sub> "<br>8.5" (21,5 cm)   | 9 <sup>3</sup> / <sub>8</sub> "<br>9.375" (23,8 cm)   | 10 <sup>1</sup> / <sub>8</sub> "<br>10.125" (25,7 cm)   | 11"<br>11" (27,9 cm)  | 11 <sup>3</sup> / <sub>4</sub> "<br>11.75" (29,8 cm)  | 12 <sup>5</sup> / <sub>8</sub> "<br>12.625" (32 cm)   |
| CODE            | 36S800  | 36S900**  | 36S958  | 36S1058**   | 36S1114   | 36S1214**   |
| CASE PACK       | 2   | 2   | 2   | 2   | 2   | 2   |
| RACK DIMENSION  | 19 <sup>3</sup> / <sub>4</sub> " x 19 <sup>3</sup> / <sub>4</sub> " x 10 <sup>1</sup> / <sub>2</sub> "<br>50 x 50 x 26,7 cm | 19 <sup>3</sup> / <sub>4</sub> " x 19 <sup>3</sup> / <sub>4</sub> " x 10 <sup>1</sup> / <sub>2</sub> "<br>50 x 50 x 26,7 cm | 19 <sup>3</sup> / <sub>4</sub> " x 19 <sup>3</sup> / <sub>4</sub> " x 12 <sup>1</sup> / <sub>2</sub> "<br>50 x 50 x 30,8 cm | 19 <sup>3</sup> / <sub>4</sub> " x 19 <sup>3</sup> / <sub>4</sub> " x 12 <sup>1</sup> / <sub>2</sub> "<br>50 x 50 x 30,8 cm | 19 <sup>3</sup> / <sub>4</sub> " x 19 <sup>3</sup> / <sub>4</sub> " x 13 <sup>3</sup> / <sub>4</sub> "<br>50 x 50 x 34,9 cm | 19 <sup>3</sup> / <sub>4</sub> " x 19 <sup>3</sup> / <sub>4</sub> " x 13 <sup>3</sup> / <sub>4</sub> "<br>50 x 50 x 34,9 cm |
| LIST PRICE EACH | \$ 151.00   | \$ 167.00   | \$ 176.00   | \$ 193.00   | \$ 199.00   | \$ 217.00   |

\*\*Compartment Extenders cannot be added.

**2<sup>1</sup>/<sub>16</sub>"** 2.44" (6,2 cm)  
MAXIMUM DIAMETER



## 49 COMPARTMENT

| MAXIMUM HEIGHT  | 3 <sup>5</sup> / <sub>8</sub> "<br>3.625" (9,2 cm)   | 5 <sup>1</sup> / <sub>4</sub> "<br>5.25" (13,3 cm)   | 6 <sup>7</sup> / <sub>8</sub> "<br>6.875" (17,4 cm)  | 8 <sup>1</sup> / <sub>2</sub> "<br>8.5" (21,5 cm)   | 10 <sup>1</sup> / <sub>8</sub> "<br>10.125" (25,7 cm)   | 11 <sup>3</sup> / <sub>4</sub> "<br>11.75" (29,8 cm)  |
|-----------------|--|--|--|---|---|---|
| CODE            | 49S318   | 49S434   | 49S638   | 49S800  | 49S958  | 49S1114   |
| CASE PACK       | 5  | 4  | 3  | 2   | 2   | 2   |
| RACK DIMENSION  | 19 <sup>3</sup> / <sub>4</sub> " x 19 <sup>3</sup> / <sub>4</sub> " x 5 <sup>5</sup> / <sub>8</sub> "<br>50 x 50 x 14,3 cm | 19 <sup>3</sup> / <sub>4</sub> " x 19 <sup>3</sup> / <sub>4</sub> " x 7 <sup>1</sup> / <sub>4</sub> "<br>50 x 50 x 18,4 cm | 19 <sup>3</sup> / <sub>4</sub> " x 19 <sup>3</sup> / <sub>4</sub> " x 8 <sup>5</sup> / <sub>8</sub> "<br>50 x 50 x 22,5 cm | 19 <sup>3</sup> / <sub>4</sub> " x 19 <sup>3</sup> / <sub>4</sub> " x 10 <sup>1</sup> / <sub>2</sub> "<br>50 x 50 x 26,7 cm | 19 <sup>3</sup> / <sub>4</sub> " x 19 <sup>3</sup> / <sub>4</sub> " x 12 <sup>1</sup> / <sub>2</sub> "<br>50 x 50 x 30,8 cm | 19 <sup>3</sup> / <sub>4</sub> " x 19 <sup>3</sup> / <sub>4</sub> " x 13 <sup>3</sup> / <sub>4</sub> "<br>50 x 50 x 34,9 cm |
| LIST PRICE EACH | \$ 82.75   | \$ 107.00  | \$ 129.25  | \$ 151.00   | \$ 180.00   | \$ 207.00   |



### Base Rack Colors:

|              |                       |                  |            |              |             |              |                  |             |                  |
|--------------|-----------------------|------------------|------------|--------------|-------------|--------------|------------------|-------------|------------------|
| 110<br>Black | 119<br>Sherwood Green | 151<br>Soft Gray | 163<br>Red | 167<br>Brown | 168<br>Blue | 184<br>Beige | 186<br>Navy Blue | 414<br>Teal | 416<br>Cranberry |
|--------------|-----------------------|------------------|------------|--------------|-------------|--------------|------------------|-------------|------------------|

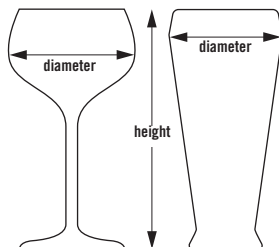
Extender Color: Soft Gray (151). \*\*Compartment Extenders cannot be added.  
Personalization available. See Camrack personalization and color coding page. Contact Customer Service for all special orders.



# HALF SIZE CAMRACKS® FOR STEMWARE & TUMBLERS



- Very effective for carrying less weight and for storing drinkware in space-restricted locations.
- Ideal for small under-counter glasswashers.



10HS434

## 8 COMPARTMENT

**4<sup>1</sup>/<sub>16</sub>"** 4.06" (10,3 cm)  
MAXIMUM DIAMETER



|                 | MAXIMUM HEIGHT | 3 <sup>5</sup> / <sub>8</sub> "<br>3.625" (9,2 cm)  | 5 <sup>1</sup> / <sub>4</sub> "<br>5.25" (13,3 cm)  | 6 <sup>7</sup> / <sub>8</sub> "<br>6.875" (17,4 cm)   | 8 <sup>1</sup> / <sub>2</sub> "<br>8.5" (21,5 cm)  | 10 <sup>1</sup> / <sub>8</sub> "<br>10.125" (25,7 cm)  | 11 <sup>3</sup> / <sub>4</sub> "<br>11.75" (29,8 cm)   |
|-----------------|----------------|---|---|---|--|--|--|
| CODE            |                | 8HS318  | 8HS434  | 8HS638  | 8HS800   | 8HS958   | 8HS1114  |
| CASE PACK       |                | 5   | 4   | 3   | 2  | 2  | 2  |
| RACK DIMENSION  |                | 19 <sup>3</sup> / <sub>4</sub> " x 10" x 5 <sup>5</sup> / <sub>8</sub> "<br>50 x 25 x 14,3 cm | 19 <sup>3</sup> / <sub>4</sub> " x 10" x 7 <sup>1</sup> / <sub>4</sub> "<br>50 x 25 x 18,4 cm | 19 <sup>3</sup> / <sub>4</sub> " x 10" x 8 <sup>7</sup> / <sub>8</sub> "<br>50 x 25 x 22,5 cm | 19 <sup>3</sup> / <sub>4</sub> " x 10" x 10 <sup>1</sup> / <sub>2</sub> "<br>50 x 25 x 26,7 cm | 19 <sup>3</sup> / <sub>4</sub> " x 10" x 12 <sup>1</sup> / <sub>8</sub> "<br>50 x 25 x 30,8 cm | 19 <sup>3</sup> / <sub>4</sub> " x 10" x 13 <sup>3</sup> / <sub>4</sub> "<br>50 x 25 x 34,9 cm |
| LIST PRICE EACH |                | \$ 58.75  | \$ 80.25  | \$ 96.75  | \$ 117.25  | \$ 138.00  | \$ 159.00  |

## 10 COMPARTMENT

**3<sup>7</sup>/<sub>16</sub>"** 3.44" (8,7 cm)  
MAXIMUM DIAMETER



|                 | MAXIMUM HEIGHT | 3 <sup>5</sup> / <sub>8</sub> "<br>3.625" (9,2 cm)  | 5 <sup>1</sup> / <sub>4</sub> "<br>5.25" (13,3 cm)  | 6 <sup>7</sup> / <sub>8</sub> "<br>6.875" (17,4 cm)   | 8 <sup>1</sup> / <sub>2</sub> "<br>8.5" (21,5 cm)  | 10 <sup>1</sup> / <sub>8</sub> "<br>10.125" (25,7 cm)  | 11 <sup>3</sup> / <sub>4</sub> "<br>11.75" (29,8 cm)   |
|-----------------|----------------|---|---|---|--|--|--|
| CODE            |                | 10HS318   | 10HS434   | 10HS638   | 10HS800  | 10HS958  | 10HS1114   |
| CASE PACK       |                | 5   | 4   | 3   | 2  | 2  | 2  |
| RACK DIMENSION  |                | 19 <sup>3</sup> / <sub>4</sub> " x 10" x 5 <sup>5</sup> / <sub>8</sub> "<br>50 x 25 x 14,3 cm | 19 <sup>3</sup> / <sub>4</sub> " x 10" x 7 <sup>1</sup> / <sub>4</sub> "<br>50 x 25 x 18,4 cm | 19 <sup>3</sup> / <sub>4</sub> " x 10" x 8 <sup>7</sup> / <sub>8</sub> "<br>50 x 25 x 22,5 cm | 19 <sup>3</sup> / <sub>4</sub> " x 10" x 10 <sup>1</sup> / <sub>2</sub> "<br>50 x 25 x 26,7 cm | 19 <sup>3</sup> / <sub>4</sub> " x 10" x 12 <sup>1</sup> / <sub>8</sub> "<br>50 x 25 x 30,8 cm | 19 <sup>3</sup> / <sub>4</sub> " x 10" x 13 <sup>3</sup> / <sub>4</sub> "<br>50 x 25 x 34,9 cm |
| LIST PRICE EACH |                | \$ 58.75  | \$ 80.25  | \$ 96.75  | \$ 117.25  | \$ 138.00  | \$ 159.00  |

## 17 COMPARTMENT

**2<sup>7</sup>/<sub>8</sub>"** 2.875" (7,3 cm)  
MAXIMUM DIAMETER

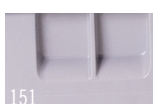


|                 | MAXIMUM HEIGHT | 3 <sup>5</sup> / <sub>8</sub> "<br>3.625" (9,2 cm)  | 5 <sup>1</sup> / <sub>4</sub> "<br>5.25" (13,3 cm)  | 6 <sup>7</sup> / <sub>8</sub> "<br>6.875" (17,4 cm)   | 8 <sup>1</sup> / <sub>2</sub> "<br>8.5" (21,5 cm)  | 10 <sup>1</sup> / <sub>8</sub> "<br>10.125" (25,7 cm)  | 11 <sup>3</sup> / <sub>4</sub> "<br>11.75" (29,8 cm)   |
|-----------------|----------------|---|---|---|--|--|--|
| CODE            |                | 17HS318   | 17HS434   | 17HS638   | 17HS800  | 17HS958  | 17HS1114   |
| CASE PACK       |                | 5   | 4   | 3   | 2  | 2  | 2  |
| RACK DIMENSION  |                | 19 <sup>3</sup> / <sub>4</sub> " x 10" x 5 <sup>5</sup> / <sub>8</sub> "<br>50 x 25 x 14,3 cm | 19 <sup>3</sup> / <sub>4</sub> " x 10" x 7 <sup>1</sup> / <sub>4</sub> "<br>50 x 25 x 18,4 cm | 19 <sup>3</sup> / <sub>4</sub> " x 10" x 8 <sup>7</sup> / <sub>8</sub> "<br>50 x 25 x 22,5 cm | 19 <sup>3</sup> / <sub>4</sub> " x 10" x 10 <sup>1</sup> / <sub>2</sub> "<br>50 x 25 x 26,7 cm | 19 <sup>3</sup> / <sub>4</sub> " x 10" x 12 <sup>1</sup> / <sub>8</sub> "<br>50 x 25 x 30,8 cm | 19 <sup>3</sup> / <sub>4</sub> " x 10" x 13 <sup>3</sup> / <sub>4</sub> "<br>50 x 25 x 34,9 cm |
| LIST PRICE EACH |                | \$ 61.25  | \$ 83.50  | \$ 105.25   | \$ 128.25  | \$ 149.75  | \$ 171.00  |

### Base Rack Colors:



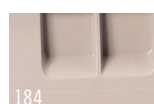
119  
Sherwood Green



151  
Soft Grey



167  
Brown



184  
Beige



186  
Navy Blue



416  
Cranberry

**Extender Color:** Soft Gray (151). Personalization available. See Camrack personalization and color coding page. Contact Customer Service for all special orders.



# STEMWARE AND GLASS SIZING REFERENCE GUIDE

## HALF SIZE RACKS Maximum Compartment Width

17 Compartment  
2 1/16" (73 mm)

10 Compartment  
3 1/2" (87 mm)

8 Compartment  
4 1/8" (103 mm)

### To Determine Compartment Size

• **Half Size Racks:**  
Place glass or stemware upside down over circle chart. Look down on the glass. Whatever circle the largest diameter of the glass fits within will determine the number of compartments.

• **Full Size Racks:**  
Place glass or stemware upside down over circle chart. Look down on the glass. Whatever circle the largest diameter of the glass fits within will determine the number of compartments.

Use the vertical  
guide marks at  
right to determine  
item height and  
appropriate rack  
number.

## FULL SIZE RACKS Maximum Compartment Width

49 Compartment 2 1/16" (60 mm)

36 Compartment 2 7/8" (72 mm)

30 Compartment 3 1/8" (79 mm)

25 Compartment 3 1/2" (87 mm)

20 Compartment 3 7/8" (98 mm)

16 Compartment 4 3/8" (109 mm)

9 Compartment 5 7/8" (148 mm)

S958  
10 1/8" (257mm)  
MH

S900  
9 3/8" (238mm)  
MH

S800  
8 1/2" (215mm)  
MH

S738  
7 3/4" (196mm)  
MH

S638  
6 7/8" (174mm)  
MH

S534  
6 1/8" (155mm)  
MH

S434  
5 1/4" (133mm)  
MH

S418  
4 1/2" (114mm)  
MH

S318  
3 5/8" (92mm)  
MH

MH = MAXIMUM HEIGHT

GLASS

STEMWARE

MILLIMETERS

INCHES

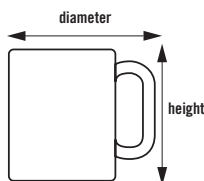


# CAMRACK® FULL & HALF SIZE CUP RACKS



## Camrack Cup Racks

Tilt feature drains water from mug or cup bases for quick and sanitary drying.



16C414

## Full Size

**4<sup>3</sup>/<sub>8</sub>" X 4<sup>5</sup>/<sub>16</sub>"**  
11,1 x 10,95 cm  
COMPARTMENT  
DIMENSIONS



### 16 COMPARTMENT

| MAXIMUM HEIGHT  | 2 <sup>5</sup> / <sub>8</sub> "<br>2.625" (6,6 cm)  | 4 <sup>1</sup> / <sub>4</sub> "<br>4.25" (10,7 cm)   | 5 <sup>7</sup> / <sub>8</sub> "<br>5.875" (14,9 cm)  |
|-----------------|---|--|--|
| CODE            | 16C258  | 16C414   | 16C578   |
| CASE PACK       | 6   | 5  | 4  |
| RACK DIMENSION  | 19 <sup>3</sup> / <sub>4</sub> " x 19 <sup>3</sup> / <sub>4</sub> " x 4"<br>50 x 50 x 10,1 cm | 19 <sup>3</sup> / <sub>4</sub> " x 19 <sup>3</sup> / <sub>4</sub> " x 5 <sup>5</sup> / <sub>8</sub> "<br>50 x 50 x 14,3 cm | 19 <sup>3</sup> / <sub>4</sub> " x 19 <sup>3</sup> / <sub>4</sub> " x 7 <sup>1</sup> / <sub>4</sub> "<br>50 x 50 x 18,4 cm |
| LIST PRICE EACH | \$ 50.95  | \$ 71.00   | \$ 106.20  |

### 20 COMPARTMENT

| MAXIMUM HEIGHT  | 2 <sup>5</sup> / <sub>8</sub> "<br>2.625" (6,6 cm)  | 4 <sup>1</sup> / <sub>4</sub> "<br>4.25" (10,7 cm)   |
|-----------------|---|--|
| CODE            | 20C258  | 20C414   |
| CASE PACK       | 6   | 5  |
| RACK DIMENSION  | 19 <sup>3</sup> / <sub>4</sub> " x 19 <sup>3</sup> / <sub>4</sub> " x 4"<br>50 x 50 x 10,1 cm | 19 <sup>3</sup> / <sub>4</sub> " x 19 <sup>3</sup> / <sub>4</sub> " x 5 <sup>5</sup> / <sub>8</sub> "<br>50 x 50 x 14,3 cm |
| LIST PRICE EACH | \$ 52.80  | \$ 72.70   |

**4<sup>3</sup>/<sub>8</sub>" X 3<sup>7</sup>/<sub>16</sub>"**  
11,1 x 8,73 cm  
COMPARTMENT  
DIMENSIONS



## Half Size

**4<sup>1</sup>/<sub>8</sub>" X 4<sup>3</sup>/<sub>8</sub>"**  
10,4 x 11,1 cm  
COMPARTMENT  
DIMENSIONS



### 8 COMPARTMENT

| MAXIMUM HEIGHT  | 2 <sup>5</sup> / <sub>8</sub> "<br>2.625" (6,6 cm)   | 4 <sup>1</sup> / <sub>4</sub> "<br>4.25" (10,7 cm)  |
|-----------------|--|---|
| CODE            | 8HC258   | 8HC414  |
| CASE PACK       | 6  | 5   |
| RACK DIMENSION  | 19 <sup>3</sup> / <sub>4</sub> " x 9 <sup>5</sup> / <sub>8</sub> " x 4"<br>50 x 25 x 10,1 cm | 19 <sup>3</sup> / <sub>4</sub> " x 9 <sup>5</sup> / <sub>8</sub> " x 5 <sup>5</sup> / <sub>8</sub> "<br>50 x 25 x 14,3 cm |
| LIST PRICE EACH | \$ 36.35   | \$ 60.30  |

### 10 COMPARTMENT

| MAXIMUM HEIGHT  | 2 <sup>5</sup> / <sub>8</sub> "<br>2.625" (6,6 cm)   | 4 <sup>1</sup> / <sub>4</sub> "<br>4.25" (10,7 cm)  |
|-----------------|--|---|
| CODE            | 10HC258  | 10HC414   |
| CASE PACK       | 6  | 5   |
| RACK DIMENSION  | 19 <sup>3</sup> / <sub>4</sub> " x 9 <sup>5</sup> / <sub>8</sub> " x 4"<br>50 x 25 x 10,1 cm | 19 <sup>3</sup> / <sub>4</sub> " x 9 <sup>5</sup> / <sub>8</sub> " x 5 <sup>5</sup> / <sub>8</sub> "<br>50 x 25 x 14,3 cm |
| LIST PRICE EACH | \$ 36.35   | \$ 60.30  |

**4<sup>1</sup>/<sub>8</sub>" X 3<sup>7</sup>/<sub>16</sub>"**  
10,4 x 8,73 cm  
COMPARTMENT  
DIMENSIONS



## Glass and Cup Keepers

- Raised ribs for easy draining and drying.
- Holds 20 glasses or 12 cups per layer.

Color: Beige (133).



Max. Glass Inside Rim Diameter:  
GK2000: 2<sup>5</sup>/<sub>8</sub>" (6,6 cm)



Max. Cup Inside Rim Diameter:  
KK1200: 2<sup>15</sup>/<sub>16</sub>" (7,4 cm)

| CODE                 | SIZE  | LIST PRICE EA. |
|----------------------|---|----------------|
| <b>Glass Keepers</b> |   |                |
| GK2000               | 14" x 18"   | \$ 21.10       |
| <b>Cup Keepers</b>   |   |                |
| KK1200               | 13 <sup>15</sup> / <sub>16</sub> " x 17 <sup>7</sup> / <sub>8</sub> " | 19.85          |
| <b>Case Pack: 12</b> |   |                |

Base Cup Rack Color: Soft Gray (151). Extender Color: Soft Gray (151).  
Personalization available. See Camrack personalization and color coding page.  
Contact Customer Service for all special orders.

# 16

## FULL RACK

## COMPARTMENT

## QUICK GUIDE

| Maximum Cup Width | Number of Compartments | Maximum Cup Height |                  |                  |
|-------------------|------------------------|--------------------|------------------|------------------|
|                   |                        | 2 5/8" (6,6 cm)    | 4 1/4" (10,7 cm) | 5 7/8" (14,9 cm) |
| 4 3/8" (11,1 cm)  | 16                     | 16C258             | 16C414           | 16C578           |
| 3 1/2" (8,8 cm)   | 20                     | 20C258             | 20C414           | 20C578           |

Turn cup or coffee mug upside down and place diagonally in square. Align handle with arrow in square. Cup or mug and handle must fit completely within boundaries of a square in order to ensure the right rack.

# 20

## FULL RACK

COMPARTMENT

## QUICK GUIDE

| Maximum Cup Width | Number of Compartments | Maximum Cup Height |                  |
|-------------------|------------------------|--------------------|------------------|
|                   |                        | 2 5/8" (6,6 cm)    | 4 1/4" (10,7 cm) |
| 4 1/8" (10,4 cm)  | 8                      | 8HC258             | 8HC414           |
| 3 1/2" (8,8 cm)   | 10                     | 10HC258            | 10HC414          |

# 10

## HALF RACK

## COMPARTMENT

**To Determine Cup Height:**

Place base of cup or coffee mug on flat surface hold ruler vertically next to it to determine height in inches or millimeters. If the height is greater than 4 1/4" (108 mm), additional 1 1/8" (41 mm) E2 and HE2 extenders may be ordered.

# 8 HALF RAC

COMPARTMENT

4 $\frac{7}{16}$ " x 4 $\frac{1}{8}$ " (11,3 x 10,4 cm)



# CAMRACK® ACCESSORIES

## Camrack Cover & Camdolly®

- Use to cover and protect full size Camrack dishracks filled with clean dishware.
- When used with a Camdolly, creates a portable sanitary storage system that protects contents between uses.

- Eliminates the use of messy, wasteful plastic wrap or vinyl covers.



### FULL RACK COVER

|                            |  |
|----------------------------|--|
| <b>CODE</b>                | DRC2020  |
| <b>EXTERIOR DIMENSIONS</b> | 19 $\frac{3}{8}$ " x 19 $\frac{3}{8}$ " x 1 $\frac{1}{16}$ "<br>(50 x 50 x 2,4 cm) |
| <b>LIST PRICE EACH</b>     | \$ 76.00   |

Case Pack: 1 Color: Gray (180).

### CAMDOLLY

|                            |   |  |
|----------------------------|---|--|
| <b>CODE</b>                | CDR2020   | CDR2020H   |
| <b>INTERIOR DIMENSIONS</b> | 20 $\frac{7}{8}$ " x 20 $\frac{7}{8}$ "<br>(53 x 53 cm)                 | 20 $\frac{7}{8}$ " x 20 $\frac{7}{8}$ "<br>(53 x 53 cm)                |
| <b>EXTERIOR DIMENSIONS</b> | 21 $\frac{3}{8}$ " x 21 $\frac{3}{8}$ " x 8"<br>(54,5 x 54,5 x 20,5 cm) | 21 $\frac{3}{8}$ " x 23 $\frac{3}{8}$ " x 37"<br>(54,5 x 59,5 x 94 cm) |
| <b>LOAD CAPACITY</b>       | 350 lbs. (159 kg)   | 350 lbs. (159 kg)  |
| <b>LIST PRICE EACH</b>     | \$ 232.00   | \$ 369.00  |

Case Pack: 1 Casters: 3 $\frac{1}{2}$ " (10 cm) casters, 4 swivel, no brakes.  
Color: Soft Gray (151).

## Camrack IceExpress Glass Filler

- Dramatically reduces banquet set-up time.
- Fills 25 glasses with ice all at once.
- Reduces breakage and risk of contamination.
- Ice falls directly into glasses with no spills or drips.

| <b>CODE</b> | <b>EXTERIOR DIM.<br/>W x D x H</b>                                      | <b>LIST<br/>PRICE EA.</b> |
|-------------|---|---------------------------|
| 25SWG       | 20" x 20 $\frac{7}{8}$ " x 1 $\frac{1}{4}$ "<br>(50,8 x 50,8 x 3,18 cm) | \$ 120.50                 |

Case Pack: 1 Color: Black (110).



## Selecting The Right Camrack

Cambro offers multiple ways to help you quickly find the right Camrack:

### 1. apps.cambro.com/Camracks

Select the item you are sizing, enter the measurements and quantity of the item, and the right Camrack will appear on the page.

### 2. Cambro Catalog

Flip to the back of the catalog for a convenient stemware, glass and cup sizing reference guide.

### 3. Cambro Sales Representatives

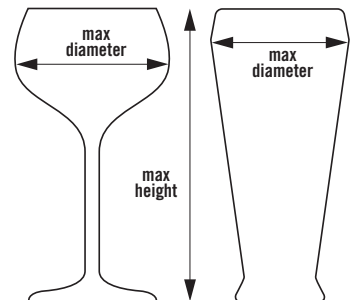
Contact your local Cambro representative or call Cambro Customer Service at 1 800 833 3003 to assist with specifying Camracks, dollies and covers that will fit your glasses and dishware.

### 4. Cambro App

Find the right Camrack for your glassware by entering the height and maximum diameter of your glass.

### Choose the correct Camrack:

1. Measure the **maximum diameter** of the glass (stemware or tumbler) to determine the number of compartments.
2. Measure the **maximum height** of the glass (stemware or tumbler) to the top edge of the rim to determine the compartment height.



Download the app at  
[www.cambro.com/app](http://www.cambro.com/app) or



# CAMRACK® BASE RACKS



- For pots, pans, bowls and large prep, service and display items.
- Half racks work well for storing items at a wait station.



BR578

## Full Size Base Racks



FULL BASE RACK



WITH 1 EXTENDER



WITH 2 EXTENDERS



WITH 3 EXTENDERS

| CODE                | BR258                                 | BR414                                  | BR578                                  | BR712                                  |
|---------------------|---------------------------------------|--|--|--|
| INSIDE RACK HEIGHT  | 3¼" (8,3 cm)                          | 4⅞" (12,4 cm)                          | 6½" (16,5 cm)                          | 8⅞" (20,6 cm)                          |
| OUTSIDE RACK HEIGHT | 4" (10,1 cm)                          | 5⅞" (14,3 cm)                          | 7¼" (18,4 cm)                          | 8⅞" (22,5 cm)                          |
| CASE PACK           | 6                                     | 5                                      | 4                                      | 3                                      |
| RACK DIMENSION      | 19¾" x 19¾" x 4"<br>50 x 50 x 10,1 cm | 19¾" x 19¾" x 5⅞"<br>50 x 50 x 14,3 cm | 19¾" x 19¾" x 7¼"<br>50 x 50 x 18,4 cm | 19¾" x 19¾" x 8⅞"<br>50 x 50 x 22,5 cm |
| LIST PRICE EACH     | \$ 50.75                              | \$ 74.00                               | \$ 94.75                               | \$ 116.50                              |

## Half Size Base Racks



HALF BASE RACK



WITH 1 EXTENDER



WITH 2 EXTENDERS



WITH 3 EXTENDERS

| CODE                | HBR258                               | HBR414                                | HBR578                                | HBR712                                |
|---------------------|--------------------------------------|---------------------------------------|---------------------------------------|---------------------------------------|
| INSIDE RACK HEIGHT  | 3¼" (8,3 cm)                         | 4⅞" (12,4 cm)                         | 6½" (16,5 cm)                         | 8⅞" (20,6 cm)                         |
| OUTSIDE RACK HEIGHT | 4" (10,1 cm)                         | 5⅞" (14,3 cm)                         | 7¼" (18,4 cm)                         | 8⅞" (22,5 cm)                         |
| CASE PACK           | 6                                    | 5                                     | 4                                     | 3                                     |
| RACK DIMENSION      | 19¾" x 9⅞" x 4"<br>50 x 25 x 10,1 cm | 19¾" x 9⅞" x 5⅞"<br>50 x 25 x 14,3 cm | 19¾" x 9⅞" x 7¼"<br>50 x 25 x 18,4 cm | 19¾" x 9⅞" x 8⅞"<br>50 x 25 x 22,5 cm |
| LIST PRICE EACH     | \$ 34.40                             | \$ 55.50                              | \$ 71.50                              | \$ 88.00                              |

## Full Size Hold Down Grid

Keeps lightweight smallwares in place during wash cycle. Use on full size Camrack Base or Flatware rack.



BR414 with  
CRPHDG2878

### HOLD DOWN GRID

|                                 |            |
|---------------------------------|------------|
| CODE                            | CRPHDG2878 |
| LIST PRICE EACH                 | \$ 37.10   |
| Case Pack: 6 Color: Gray (000). |            |

### Base Rack Colors:

|               |                       |                  |             |              |              |              |                  |              |                  |
|---------------|-----------------------|------------------|-------------|--------------|--------------|--------------|------------------|--------------|------------------|
| 110<br>Black* | 119<br>Sherwood Green | 151<br>Soft Gray | 163<br>Red* | 167<br>Brown | 168<br>Blue* | 184<br>Beige | 186<br>Navy Blue | 414<br>Teal* | 416<br>Cranberry |
|---------------|-----------------------|------------------|-------------|--------------|--------------|--------------|------------------|--------------|------------------|

\*Full size only. Extender Color: Soft Gray (151). Personalization available. See Camrack personalization and color coding page. Contact Customer Service for all special orders.



## CAMRACK® FULL SIZE PEG RACKS & TRAY RACK

### Standard 9 x 9 Peg Rack

- Designed to wash varying sized plates, bowls, trays and plate covers.
- Standard peg racks hold:
  - Eighteen 10" (25,4 cm) plates
  - Twelve 12" (30,5 cm) plates
  - Twenty-seven 7½" (19 cm) plates
 or
  - Nine 14" x 18" (36 x 46 cm) trays.

### Versatile 5 x 9 Peg Rack

- Holds standard plates in one direction or deep plates, bowls and plate covers in the other direction.
- 5 spacing configuration holds up to ten 10" (25,4 cm) bowls, deep plates, platters or plate covers.

- 9 spacing configuration holds up to:
  - Eighteen 10" (25,4 cm) plates
  - Twelve 12" (30,5 cm) plates
  - Twenty-seven 7½" (19 cm) plates
 or
  - Nine 14" x 18" (36 x 46 cm) trays.

### Open End Tray Rack

- Holds cafeteria trays or full-size sheet pans.
- Open-ended on one side for easy placement and removal of trays of all lengths.
- Holds up to nine trays upright.



**9 X 9 PEG RACK**



**9 X 9 PEG RACK WITH 1 EXTENDER**



**5 X 9 PEG RACK**



**5 X 9 PEG RACK WITH 1 EXTENDER**



**OPEN END TRAY RACK**

| CODE                | PR314        | PR500         | PR59314      | PR59500       | OETR314*     |
|---------------------|--------------|---------------|--------------|---------------|--------------|
| INSIDE RACK HEIGHT  | 3¼" (8,3 cm) | 4⅞" (12,4 cm) | 3¼" (8,3 cm) | 4⅞" (12,4 cm) | 3¼" (8,3 cm) |
| OUTSIDE RACK HEIGHT | 4" (10,1 cm) | 5⅞" (14,3 cm) | 4" (10,1 cm) | 5⅞" (14,3 cm) | 4" (10,1 cm) |
| CASE PACK           | 6            | 5             | 6            | 5             | 6            |
| LIST PRICE EACH     | \$ 54.75     | \$ 78.00      | \$ 54.75     | \$ 78.00      | \$ 53.75     |

**Color:** Soft Gray (151). **Extender Color:** Soft Gray (151). Personalization available. See Camrack personalization and color coding page. Contact Customer Service for all special orders. \*Extenders may be added to all Peg Racks except the OETR314.

## CAMRACK FULL & HALF SIZE FLATWARE RACKS & CYLINDERS

### Camrack Flatware Racks

- 8 Compartment Basket fits into a Full or Half Size Base Rack. Wire handles slide down for easy storage.
- Flatware Cylinder fits into 9-compartment Full Size Camrack and the Cambro Tray and Dish Cart, model TDCR12.



**FULL FLATWARE RACK**



**HALF FLATWARE RACK**



**8 COMPARTMENT HALF FLATWARE BASKET**



**8 COMPARTMENT HALF FLATWARE BASKET**



**FLATWARE CYLINDER**

| CODE                | FR258        | HFR258       | 8FB434* with handles | 8FBNH434* no handles | FWC56              |
|---------------------|--------------|--------------|----------------------|----------------------|--------------------|
| INSIDE RACK HEIGHT  | 2⅝" (6,7 cm) | 2⅝" (6,7 cm) | 4¾" (12 cm)          | 4¾" (12 cm)          | 4½" wide (11,4 cm) |
| OUTSIDE RACK HEIGHT | 4" (10,1 cm) | 4" (10,1 cm) | 7¼" (18,4 cm)        | 7¼" (18,4 cm)        | 5½" high (13,9 cm) |
| CASE PACK           | 6            | 6            | 6                    | 6                    | 12                 |
| LIST PRICE EACH     | \$ 54.75     | \$ 47.30     | \$ 65.00             | \$ 38.15             | \$ 6.45            |

**Color:** Soft Gray (151). **Extender Color:** Soft Gray (151). **Flatware Cylinder Color:** White (148). Personalization available. See Camrack personalization and color coding page. Contact Customer Service for all special orders. \*Extenders cannot be added.

# CAMRACK® COMPONENT SYSTEM

The Camrack System offers several choices for ordering the right Camracks. Please consult with your sales representative or Cambro Customer Service for all special ordering and assembly directions.

## Choose Between:

1. A complete selection of pre-assembled, ready to use Camracks listed in our catalog; or
2. Custom built special order Camracks for specific needs; or
3. Individual Camrack components for distributors to stock and build racks as needed.

## Base Rack Colors:

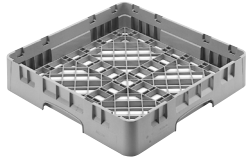
Sherwood Green (119), Soft Gray (151), Brown (167), Beige (184), Navy Blue (186), Cranberry (416), Black (110)\*, Red (163)\*, Blue (168)\*, Teal (414)\*.

**Base Cup Rack Color:** Soft Gray (151).

**Flatware Rack Color:** Soft Gray (151).

**Extender Color:** Soft Gray (151).

\*Full size only.



**BR** = Full Size Base Rack



**HBR** = Half Size Base Rack



**E1** = Full Size Full Drop Compartment Extender



**HE1** = Half Size Full Drop Compartment Extender



**E2** = Full Size Half Drop Compartment Extender



**HE2** = Half Size Half Drop Compartment Extender



**E3** = Full Size Open Extender



**HE3** = Half Size Open Extender



**E4** = Full Size Full Drop Compartment Extender



**E5** = Full Size Half Drop Compartment Extender

## CAMRACK COMPONENTS

Only E3 extenders may be added to E4's and E5's.

| CODE  | DESCRIPTION                                       | OVERALL DIMENSIONS                    | COMPARTMENT              | INSIDE RACK HEIGHT | CASE PACK | LIST PRICE EA. |
|---|---|---------------------------------------|--------------------------|--------------------|-----------|----------------|
| <b>Full Size Base Racks</b>                       |   |                                       |                          |                    |           |                |
| BR258   | Full base rack                                    | 19¾" x 19¾" x 4" (500 x 500 x 101 mm) | 18" x 18" (457 x 457 mm) | 2⅝" (67 mm)        | 6         | \$ 50.75       |
| <b>Half Size Base Racks</b>                       |   |                                       |                          |                    |           |                |
| HBR258  | Half base rack                                    | 19¾" x 9⅞" x 4" (500 x 250 x 101)     | 18¾" x 8⅜" (464 x 213)   | 2⅝" (67)           | 6         | 34.40          |
| <b>Full Size Base Cup Racks</b>                   |   |                                       |                          |                    |           |                |
| 16C258  | 16-compartment full cup rack                      | 19¾" x 19¾" x 4" (500 x 500 x 101)    | 4⅜" x 4⅜" (111 x 111)    | 2⅝" (67)           | 6         | 55.50          |
| 20C258  | 20-compartment full cup rack                      | 19¾" x 19¾" x 4" (500 x 500 x 101)    | 4⅜" x 3½" (111 x 89)     | 2⅝" (67)           | 6         | 57.50          |
| <b>Half Size Base Cup Racks</b>                   |   |                                       |                          |                    |           |                |
| 8HC258  | 8-compartment half cup rack                       | 19¾" x 9⅞" x 4" (500 x 250 x 101)     | 4⅜" x 4⅞" (105 x 113)    | 2⅝" (67)           | 6         | 39.45          |
| 10HC258   | 10-compartment half cup rack                      | 19¾" x 9⅞" x 4" (500 x 250 x 101)     | 4⅜" x 3½" (105 x 89)     | 2⅝" (67)           | 6         | 39.45          |
| <b>Full Size Full Drop Extenders – E1 and GE1</b> |   |                                       |                          |                    |           |                |
| 9E1   | 9-compartment full drop extender                  | 19⅝" x 19⅝" x 2" (499 x 499 x 51)     | 5⅞" x 5⅞" (150 x 150)    | 1⅝" (41)           | 12        | 23.40          |
| 16E1  | 16-compartment full drop extender                 | 19⅝" x 19⅝" x 2" (499 x 499 x 51)     | 4⅜" x 4⅜" (111 x 111)    | 1⅝" (41)           | 12        | 24.85          |
| 20GE1   | 20-compartment full drop extender                 | 19⅝" x 19⅝" x 2" (499 x 499 x 51)     | 3⅞" x 3⅞" (98 x 98)      | 1⅝" (41)           | 12        | 26.25          |
| 25E1  | 25-compartment full drop extender                 | 19⅝" x 19⅝" x 2" (499 x 499 x 51)     | 3½" x 3½" (89 x 89)      | 1⅝" (41)           | 12        | 26.25          |
| 30GE1   | 30-compartment full drop extender                 | 19⅝" x 19⅝" x 2" (499 x 499 x 51)     | 3⅞" x 3⅞" (79 x 79)      | 1⅝" (41)           | 12        | 26.65          |
| 36E1  | 36-compartment full drop extender                 | 19⅝" x 19⅝" x 2" (499 x 499 x 51)     | 2⅞" x 2⅞" (73 x 73)      | 1⅝" (41)           | 12        | 26.65          |
| 49E1  | 49-compartment full drop extender                 | 19⅝" x 19⅝" x 2" (499 x 499 x 51)     | 2⅞" x 2⅞" (62 x 62)      | 1⅝" (41)           | 12        | 26.65          |
| <b>Full Size Half Drop Extenders – E2 and GE2</b> |   |                                       |                          |                    |           |                |
| 9E2   | 9-compartment half drop extender                  | 19⅝" x 19⅝" x 2" (499 x 499 x 51)     | 5⅞" x 5⅞" (150 x 150)    | 1⅝" (41)           | 12        | 22.10          |
| 16E2  | 16-compartment half drop extender                 | 19⅝" x 19⅝" x 2" (499 x 499 x 51)     | 4⅜" x 4⅜" (111 x 111)    | 1⅝" (41)           | 12        | 22.10          |
| 20E2  | 20-compartment half drop extender (for cups only) | 19⅝" x 19⅝" x 2" (499 x 499 x 51)     | 4⅜" x 3½" (111 x 89)     | 1⅝" (41)           | 12        | 20.35          |
| 20GE2   | 20-compartment half drop extender                 | 19⅝" x 19⅝" x 2" (499 x 499 x 51)     | 3⅞" x 3⅞" (98 x 98)      | 1⅝" (41)           | 12        | 22.70          |
| 25E2  | 25-compartment half drop extender                 | 19⅝" x 19⅝" x 2" (499 x 499 x 51)     | 3½" x 3½" (89 x 89)      | 1⅝" (41)           | 12        | 22.70          |
| 30GE2   | 30-compartment half drop extender                 | 19⅝" x 19⅝" x 2" (499 x 499 x 51)     | 3⅞" x 3⅞" (79 x 79)      | 1⅝" (41)           | 12        | 23.95          |



# CAMRACK® COMPONENT SYSTEM

| CODE  | DESCRIPTION                       | OVERALL DIMENSIONS   | COMPARTMENT  | INSIDE RACK HEIGHT        | CASE PACK | LIST PRICE EA. |
|---|-----------------------------------|--|--|---------------------------|-----------|----------------|
| <b>Full Size Half Drop Extenders – E2 and GE2 (continued)</b> |                                   |  |  |                           |           |                |
| 36E2  | 36-compartment half drop extender | 19 $\frac{5}{8}$ " x 19 $\frac{5}{8}$ " x 2" (499 x 499 x 51 mm) | 2 $\frac{1}{4}$ " x 2 $\frac{1}{4}$ " (73 x 73 mm) | 1 $\frac{5}{8}$ " (41 mm) | 12        | \$ 23.95       |
| 49E2  | 49-compartment half drop extender | 19 $\frac{5}{8}$ " x 19 $\frac{5}{8}$ " x 2" (499 x 499 x 51)    | 2 $\frac{1}{16}$ " x 2 $\frac{1}{16}$ " (62 x 62)  | 1 $\frac{5}{8}$ " (41)    | 12        | 23.95          |
| <b>Full Size Open Extender – E3</b>                           |                                   |  |  |                           |           |                |
| E3  | Open extender                     | 19 $\frac{5}{8}$ " x 19 $\frac{5}{8}$ " x 2" (499 x 499 x 51)    | 18" x 18" (457 x 457)                              | 1 $\frac{5}{8}$ " (41)    | 12        | 18.80          |
| <b>Full Size Full Drop Extender – E4</b>                      |                                   |  |  |                           |           |                |
| 16E4  | 16-compartment full drop extender | 19 $\frac{5}{8}$ " x 19 $\frac{5}{8}$ " x 2" (499 x 499 x 51)    | 4 $\frac{3}{8}$ " x 4 $\frac{3}{8}$ " (111 x 111)  | 1 $\frac{5}{8}$ " (41)    | 12        | 26.65          |
| 25E4  | 25-compartment full drop extender | 19 $\frac{5}{8}$ " x 19 $\frac{5}{8}$ " x 2" (499 x 499 x 51)    | 3 $\frac{1}{2}$ " x 3 $\frac{1}{2}$ " (89 x 89)    | 1 $\frac{5}{8}$ " (41)    | 12        | 30.40          |
| 36E4  | 36-compartment full drop extender | 19 $\frac{5}{8}$ " x 19 $\frac{5}{8}$ " x 2" (499 x 499 x 51)    | 2 $\frac{1}{8}$ " x 2 $\frac{1}{8}$ " (73 x 73)    | 1 $\frac{5}{8}$ " (41)    | 12        | 34.40          |
| <b>Full Size Half Drop Extender – E5</b>                      |                                   |  |  |                           |           |                |
| 16E5  | 16-compartment half drop extender | 19 $\frac{5}{8}$ " x 19 $\frac{5}{8}$ " x 2" (499 x 499 x 51)    | 4 $\frac{3}{8}$ " x 4 $\frac{3}{8}$ " (111 x 111)  | 1 $\frac{5}{8}$ " (41)    | 12        | 23.45          |
| 25E5  | 25-compartment half drop extender | 19 $\frac{5}{8}$ " x 19 $\frac{5}{8}$ " x 2" (499 x 499 x 51)    | 3 $\frac{1}{2}$ " x 3 $\frac{1}{2}$ " (89 x 89)    | 1 $\frac{5}{8}$ " (41)    | 12        | 25.45          |
| 36E5  | 36-compartment half drop extender | 19 $\frac{5}{8}$ " x 19 $\frac{5}{8}$ " x 2" (499 x 499 x 51)    | 2 $\frac{1}{8}$ " x 2 $\frac{1}{8}$ " (73 x 73)    | 1 $\frac{5}{8}$ " (41)    | 12        | 26.65          |
| <b>Half Size Full Drop Extenders – HE1</b>                    |                                   |  |  |                           |           |                |
| 8HE1  | 8-compartment full drop extender  | 19 $\frac{3}{4}$ " x 9 $\frac{7}{8}$ " x 2" (502 x 252 x 51)     | 4 $\frac{1}{8}$ " x 4 $\frac{1}{16}$ " (105 x 113) | 1 $\frac{5}{8}$ " (41)    | 12        | 20.85          |
| 10HE1   | 10-compartment full drop extender | 19 $\frac{3}{4}$ " x 9 $\frac{7}{8}$ " x 2" (502 x 252 x 51)     | 4 $\frac{1}{8}$ " x 3 $\frac{1}{2}$ " (105 x 89)   | 1 $\frac{5}{8}$ " (41)    | 12        | 20.85          |
| 17HE1   | 17-compartment full drop extender | 19 $\frac{3}{4}$ " x 9 $\frac{7}{8}$ " x 2" (502 x 252 x 51)     | ø 2 $\frac{15}{16}$ " (ø 74)                       | 1 $\frac{5}{8}$ " (41)    | 12        | 20.85          |
| <b>Half Size Half Drop Extenders – HE2</b>                    |                                   |  |  |                           |           |                |
| 8HE2  | 8-compartment half drop extender  | 19 $\frac{3}{4}$ " x 9 $\frac{7}{8}$ " x 2" (502 x 252 x 51)     | 4 $\frac{1}{8}$ " x 4 $\frac{1}{16}$ " (105 x 113) | 1 $\frac{5}{8}$ " (41)    | 12        | 18.75          |
| 10HE2   | 10-compartment half drop extender | 19 $\frac{3}{4}$ " x 9 $\frac{7}{8}$ " x 2" (502 x 252 x 51)     | 4 $\frac{1}{8}$ " x 3 $\frac{1}{2}$ " (105 x 89)   | 1 $\frac{5}{8}$ " (41)    | 12        | 19.60          |
| 17HE2   | 17-compartment half drop extender | 19 $\frac{3}{4}$ " x 9 $\frac{7}{8}$ " x 2" (502 x 252 x 51)     | ø 2 $\frac{15}{16}$ " (ø 74)                       | 1 $\frac{5}{8}$ " (41)    | 12        | 20.85          |
| <b>Half Size Open Extenders – HE3</b>                         |                                   |  |  |                           |           |                |
| HE3   | Open extender                     | 19 $\frac{3}{4}$ " x 9 $\frac{7}{8}$ " x 2" (502 x 252 x 51)     | 18 $\frac{1}{4}$ " x 8 $\frac{3}{8}$ " (464 x 213) | 1 $\frac{5}{8}$ " (41)    | 12        | 16.70          |

ø = Diameter



**StaySafe**  
**StoreSafe**

# PERSONALIZED CAMRACKS®

- Personalize Camracks to identify contents at a glance for accurate inventory control and selection.
- Hot stamp a custom logo, information or standard content symbols, and/or descriptions on two opposite, diagonal sides of any rack.
- Pre-printed clips (up to 4 per rack) can be ordered factory installed for an additional charge.



## HOW TO ORDER A SAMPLE

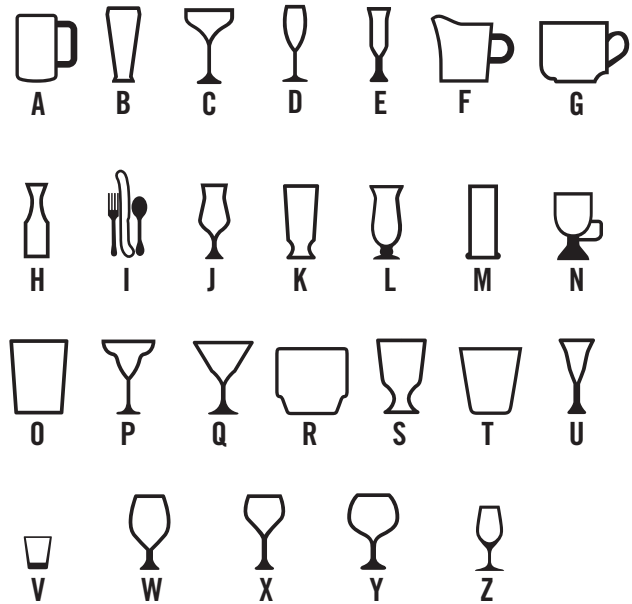
1. Contact your local Cambro rep to complete and submit a sample request form to Cambro. Indicate location of hot stamp and/or clip on rack. Maximum hot stamp imprint size is **W 4" x H 1¼"**. Maximum hot stamp imprinting thickness per solid letter or logo should be no more than 4" wide.
2. If selecting custom hot stamping, provide ready-to-use artwork, in digital format only. Sample request form must be submitted to Cambro **PRIOR** to artwork being sent. If artwork is incomplete, graphic support services are available for \$ 50.00 per hour.
3. E-mail artwork to Cambro Rep or to Cambro at: [letsgetpersonal@cambro.com](mailto:letsgetpersonal@cambro.com). Title e-mail subject with logo name and provide contact info.  
**File dimensions:** 100% reproduction size, 300dpi resolution.  
**File type:** Adobe® Illustrator®, Photoshop®.  
**File format:** JPEG, TIFF or EPS.
4. Questions? Contact Kristie Patterson at 714-230-4125 direct or 800-854-7631 ext. 4125.
5. Signed approval form must be included with purchase order for processing. This form is included with each sample.

## PERSONALIZATION CHARGES (NET)

|                       |   |
|-----------------------|---|
| One Time Plate Charge | \$ 100.00 (for custom hot stamp only)       |
| Set-Up Charge         | 50.00                                       |
| Sample Charge         | 50.00                                       |
| Imprint Charge        | 1.00 per side, 2 sides max for hot stamping |

# STANDARD HOT STAMP SYMBOLS AND/OR DESCRIPTIONS

**Step 1.** Choose a symbol and corresponding letter that best fits your glassware.



**Step 2.** Choose the verbiage and corresponding number that best describes your glassware. **Available in English Only.**

- |                    |                          |                           |
|--------------------|--------------------------|---------------------------|
| 1. Beer            | 13. Flatware             | 25. Rocks (Tumbler Style) |
| 2. Beer Mug        | 14. Goblet               | 26. Sherry                |
| 3. Pilsner         | 15. Grande               | 27. Shot Glass            |
| 4. Brandy          | 16. Hi-Ball              | 28. Sorbet                |
| 5. Champagne       | 17. Hurricane            | 29. Water (Footed Style)  |
| 6. Champagne Flute | 18. Iced Tea             | 30. Water (Tumbler Style) |
| 7. Coffee Mug      | 19. Irish Coffee         | 31. White Wine            |
| 8. Collins         | 20. Juice                | 32. Wine                  |
| 9. Cordial         | 21. Margarita            | 33. Red Wine              |
| 10. Creamer        | 22. Martini              | 34. Port                  |
| 11. Cup            | 23. Old Fashioned        |                           |
| 12. Decanter       | 24. Rocks (Footed Style) |                           |

**Step 3.** Select hot stamp color. Choose from white, black, red or blue.

## HOT STAMP OPTIONS



CUSTOM LOGO AND/OR TEXT



STANDARD SYMBOL AND DESCRIPTION



STANDARD SYMBOL ONLY



STANDARD DESCRIPTION ONLY



# CAMRACK® EXTENDER ID CLIP


- The industry's only 4-in-1 glassware management system makes inventory management quick and easy.
- Made of ABS, these clips are virtually unbreakable, and designed to withstand the high heat of commercial dishwashers.
- An economical and sustainable solution to discarding existing racks or labeling with markers, tape or wall placards.
- Snap ID clips onto existing racks or have factory installed with new Camrack orders, up to 4 per rack, placed on the left only on each side as shown in image. Installation cost is \$.90 net per clip (charged in addition to actual cost per clip).



**PRE-PRINTED CLIPS** (Available in 6-packs only, no broken bags.) **\$ 2.35 List per clip**  
**FACTORY INSTALLED CLIPS \$ .90 Net per clip**

| CODE  |                 |           |
|---|-----------------|-----------|
|    | Beer            | CECBE6000 |
|    | Beer Mug        | CECBM6000 |
|   | Brandy          | CECBB6000 |
|  | Champagne       | CECCH6000 |
|  | Champagne Flute | CECCF6000 |
|  | Coffee Mug      | CECCM6000 |
|  | Collins         | CECCL6000 |
|  | Cordial         | CECCO6000 |
|  | Creamer         | CECCR6000 |
|  | Cup             | CECCP6000 |
|  | Decanter        | CECDC6000 |
|  | Flatware        | CECFL6000 |

| CODE  |              |           |
|---|--------------|-----------|
|    | Goblet       | CECGO6000 |
|    | Grande       | CECGR6000 |
|   | Hi-Ball      | CECHB6000 |
|  | Hurricane    | CECHU6000 |
|  | Iced Tea     | CECIT6000 |
|  | Irish Coffee | CECIC6000 |
|  | Juice        | CECJU6000 |
|  | Margarita    | CECMG6000 |
|  | Martini      | CECMT6000 |
|  | Old Fashion  | CECOF6000 |
|  | Pilsner      | CECPI6000 |
|  | Red Wine     | CECRW6000 |

| CODE  |                       |                                    |
|---|-----------------------|------------------------------------|
|    | Rocks (footed style)  | CECRF6000                          |
|    | Rocks (tumbler style) | CECRT6000                          |
|   | Sherry                | CECSH6000                          |
|  | Shot Glass            | CECSG6000                          |
|  | Sorbet                | CECSB6000                          |
|  | Water (footed style)  | CECWF6000                          |
|  | Water (tumbler style) | CECWT6000                          |
|  | White Wine            | CECWW6000                          |
|  | Wine                  | CECWI6000                          |
|  | Port                  | CECPO6000                          |
|   |                       | CECBL6000                          |
|   |                       | Blank Clip (\$ 2.00 list per clip) |

(Available in English only)

# CAMDOLLIES®

- Use to easily transport multiple products in house and/or off site.
- Reduce employee lifting and carrying and possible injury.
- Made of extremely durable plastic that will not dent, crack, rust or corrode.
- Heavy-duty casters maneuver easily over all types of terrain.
- For heavy transport needs, select models with handles and Rear Big Wheels.

**Colors:** Coffee Beige (157), Dark Brown (131), Black (110), Slate Blue (401).  
**CDR2020, CDR2020H Color:** Soft Gray (151).

## Caster Type

- A:** 5" casters: 2 fixed, 2 swivel, 1 with brake.  
**B:** 3" casters: 4 swivel, no brakes.  
**C:** 10" rear big wheels, 2 front 5" swivel casters, 1 with brake.  
**D:** 3½" casters: 4 swivel, no brakes.

**Case Pack:** 1

## Camdollies for Camracks®

| CODE                    | CDR2020           |
|-------------------------|-------------------|
| EXTERNAL DIM. W x D x H | 21½" x 20⅞" x 7⅞" |
| INTERIOR DIM. W x D     | 20⅞" x 20⅞"       |
| LIST PRICE EACH         | \$ 232.00         |

|                      |                  |
|----------------------|------------------|
| 350 lbs.<br>CAPACITY | D<br>CASTER TYPE |
|----------------------|------------------|



InStock Color:  
Soft Gray (151)

| CODE                    | CDR2020H           |
|-------------------------|--------------------|
| EXTERNAL DIM. W x D x H | 20⅞" x 25¼" x 36½" |
| INTERIOR DIM. W x D     | 20⅞" x 20⅞"        |
| LIST PRICE EACH         | \$ 369.00          |

|                      |                  |
|----------------------|------------------|
| 350 lbs.<br>CAPACITY | D<br>CASTER TYPE |
|----------------------|------------------|



With powder coated handle.

| CODE                    | CD2020            |
|-------------------------|-------------------|
| EXTERNAL DIM. W x D x H | 22½" x 22½" x 8¼" |
| INTERIOR DIM. W x D     | 20⅞" x 20⅞"       |
| LIST PRICE EACH         | \$ 402.00         |

|                      |                  |
|----------------------|------------------|
| 300 lbs.<br>CAPACITY | B<br>CASTER TYPE |
|----------------------|------------------|



| CODE                    | CD2020H            |
|-------------------------|--------------------|
| EXTERNAL DIM. W x D x H | 22½" x 25⅞" x 36⅞" |
| INTERIOR DIM. W x D     | 20⅞" x 20⅞"        |
| LIST PRICE EACH         | \$ 630.00          |

|                      |                  |
|----------------------|------------------|
| 350 lbs.<br>CAPACITY | B<br>CASTER TYPE |
|----------------------|------------------|



| CODE                    | CD2020HB           |
|-------------------------|--------------------|
| EXTERNAL DIM. W x D x H | 26¼" x 26½" x 36⅞" |
| INTERIOR DIM. W x D     | 20⅞" x 20⅞"        |
| LIST PRICE EACH         | \$ 815.00          |

|                      |                  |
|----------------------|------------------|
| 350 lbs.<br>CAPACITY | C<br>CASTER TYPE |
|----------------------|------------------|



## Camdollies for 18" x 26" Trays or Sheet Pans

| CODE                    | CD1826H           |
|-------------------------|-------------------|
| EXTERNAL DIM. W x D x H | 20" x 31½" x 38¼" |
| INTERIOR DIM. W x D     | 18" x 26"         |
| LIST PRICE EACH         | \$ 745.00         |

|                      |                  |
|----------------------|------------------|
| 300 lbs.<br>CAPACITY | A<br>CASTER TYPE |
|----------------------|------------------|



| CODE                    | CD1826HB           |
|-------------------------|--------------------|
| EXTERNAL DIM. W x D x H | 23½" x 32½" x 36½" |
| INTERIOR DIM. W x D     | 18½" x 26⅞"        |
| LIST PRICE EACH         | \$ 920.00          |

|                      |                  |
|----------------------|------------------|
| 300 lbs.<br>CAPACITY | C<br>CASTER TYPE |
|----------------------|------------------|





# CAMDOLLIES®

## For Milk Crates and #10 Can Cases

| CODE                    | CD1420   |
|-------------------------|--|
| EXTERNAL DIM. W x D x H | 16 <sup>1</sup> / <sub>4</sub> " x 21 <sup>3</sup> / <sub>4</sub> " x 8 <sup>5</sup> / <sub>16</sub> " |
| INTERIOR DIM. W x D     | 13 <sup>7</sup> / <sub>8</sub> " x 19 <sup>5</sup> / <sub>16</sub> "                                   |
| LIST PRICE EACH         | \$ 365.00  |

Holds: 14" x 19" milk crates and #10 can cases.

|                      |                  |     |   |
|----------------------|------------------|-----|---|
| 350 lbs.<br>CAPACITY | B<br>CASTER TYPE | NSF |  |
|----------------------|------------------|-----|---|



| CODE                    | CD2028  |
|-------------------------|---|
| EXTERNAL DIM. W x D x H | 21 <sup>7</sup> / <sub>8</sub> " x 30 <sup>1</sup> / <sub>4</sub> " x 8 <sup>1</sup> / <sub>4</sub> " |
| INTERIOR DIM. W x D     | 19 <sup>1</sup> / <sub>2</sub> " x 27 <sup>7</sup> / <sub>8</sub> "                                   |
| LIST PRICE EACH         | \$ 380.00   |

Holds: 14" x 19" milk crates, #10 can cases and UPC101, UPC400, 100MPC, UPC100, UPC300.

|                      |                  |     |   |
|----------------------|------------------|-----|---|
| 350 lbs.<br>CAPACITY | B<br>CASTER TYPE | NSF |  |
|----------------------|------------------|-----|---|



| CODE                    | CD1313  |
|-------------------------|---|
| EXTERNAL DIM. W x D x H | 16 <sup>7</sup> / <sub>8</sub> " x 16 <sup>7</sup> / <sub>8</sub> " x 8 <sup>1</sup> / <sub>4</sub> " |
| INTERIOR DIM. W x D     | 13 <sup>1</sup> / <sub>16</sub> " x 13 <sup>1</sup> / <sub>16</sub> "                                 |
| LIST PRICE EACH         | \$ 335.00   |

Holds: 13" x 13" milk crates.

|                      |                  |     |   |
|----------------------|------------------|-----|---|
| 250 lbs.<br>CAPACITY | B<br>CASTER TYPE | NSF |  |
|----------------------|------------------|-----|---|



| CODE                    | CD1327  |
|-------------------------|---|
| EXTERNAL DIM. W x D x H | 16" x 29" x 8 <sup>1</sup> / <sub>4</sub> "                         |
| INTERIOR DIM. W x D     | 13 <sup>5</sup> / <sub>8</sub> " x 26 <sup>5</sup> / <sub>8</sub> " |
| LIST PRICE EACH         | \$ 365.00   |

Holds: 13" x 13" milk crates and #10 can cases.

|                      |                  |     |   |
|----------------------|------------------|-----|---|
| 300 lbs.<br>CAPACITY | B<br>CASTER TYPE | NSF |  |
|----------------------|------------------|-----|---|



# UTILITY TRUCKS

- Use for transporting loads up to 600 lbs.
- Large platforms for convenient loading and built-in handles for easy maneuvering.
- All models feature 5" (12,7 cm) heavy-duty casters bolted into molded-in metal backing plates.

Colors: Coffee Beige (157), Dark Brown (131), Black (110), Slate Blue (401).

Castors: 5", 2 fixed, 2 swivel, 1 with brake.

Case Pack: 1

| CODE                    | 2030UT   |
|-------------------------|--|
| EXTERNAL DIM. W x D x H | 19 <sup>3</sup> / <sub>4</sub> " x 32 <sup>1</sup> / <sub>2</sub> " x 38 <sup>1</sup> / <sub>2</sub> " |
| LOAD PLATFORM           | 19 <sup>3</sup> / <sub>4</sub> " x 29 <sup>5</sup> / <sub>8</sub> "                                    |
| LIST PRICE EACH         | \$ 915.00  |

600 lbs.  
CAPACITY



With chrome handle.

| CODE                    | 2436UTH  |
|-------------------------|--|
| EXTERNAL DIM. W x D x H | 24 <sup>7</sup> / <sub>8</sub> " x 41 <sup>3</sup> / <sub>4</sub> " x 36 <sup>3</sup> / <sub>4</sub> " |
| LOAD PLATFORM           | 23 <sup>5</sup> / <sub>8</sub> " x 35 <sup>5</sup> / <sub>8</sub> "                                    |
| LIST PRICE EACH         | \$ 875.00  |

600 lbs.  
CAPACITY



| CODE            | UTHSTP (STRAP) |
|-----------------|----------------|
| DIMENSION       | 200" long      |
| LIST PRICE EACH | \$ 20.65       |



| CODE                    | 2436UTHS   |
|-------------------------|--|
| EXTERNAL DIM. W x D x H | 24 <sup>7</sup> / <sub>8</sub> " x 41 <sup>3</sup> / <sub>4</sub> " x 36 <sup>3</sup> / <sub>4</sub> " |
| LOAD PLATFORM           | 23 <sup>5</sup> / <sub>8</sub> " x 35 <sup>5</sup> / <sub>8</sub> "                                    |
| LIST PRICE EACH         | \$ 930.00  |

600 lbs.  
CAPACITY



Includes two straps. UTHSTP

# STANDARD ADJUSTABLE DISH CADDY S-SERIES

- Store one size dish or a combination of different sizes in a single caddy.
- Features easy-to-adjust column towers.

**Colors:** Black (110), Slate Blue (401), Speckled Gray (480), Dark Brown (131).

**Casters:** 5", 2 swivel with brakes and two 10" Easy wheels.

Vinyl cover included. Not NSF listed.

For square and rectangular plates, please contact Cambro for suggested use.



Holds plates and bowls from 4<sup>5</sup>/<sub>8</sub>" to 13"

## Single Size Plate Storage

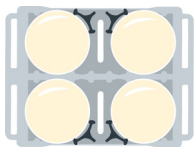


Plate sizes: 9<sup>1</sup>/<sub>4</sub>" to 13" diam.  
4 columns: (60 each)  
Total Capacity: 240

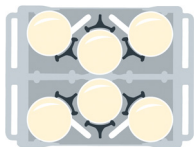


Plate sizes: 7<sup>1</sup>/<sub>4</sub>" to 9" diam.  
6 columns: (60 each)  
Total Capacity: 360

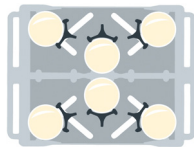


Plate sizes: 5<sup>1</sup>/<sub>2</sub>" to 7" diam.  
6 columns: (45 each)  
Total Capacity: 270

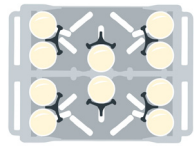
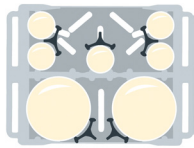
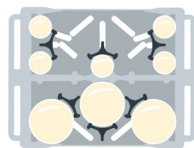


Plate sizes: 4<sup>5</sup>/<sub>8</sub>" to 5<sup>1</sup>/<sub>4</sub>" diam.  
10 columns: (45 each)  
Total Capacity: 450

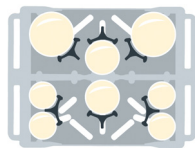
## Mixed Size Plate Storage



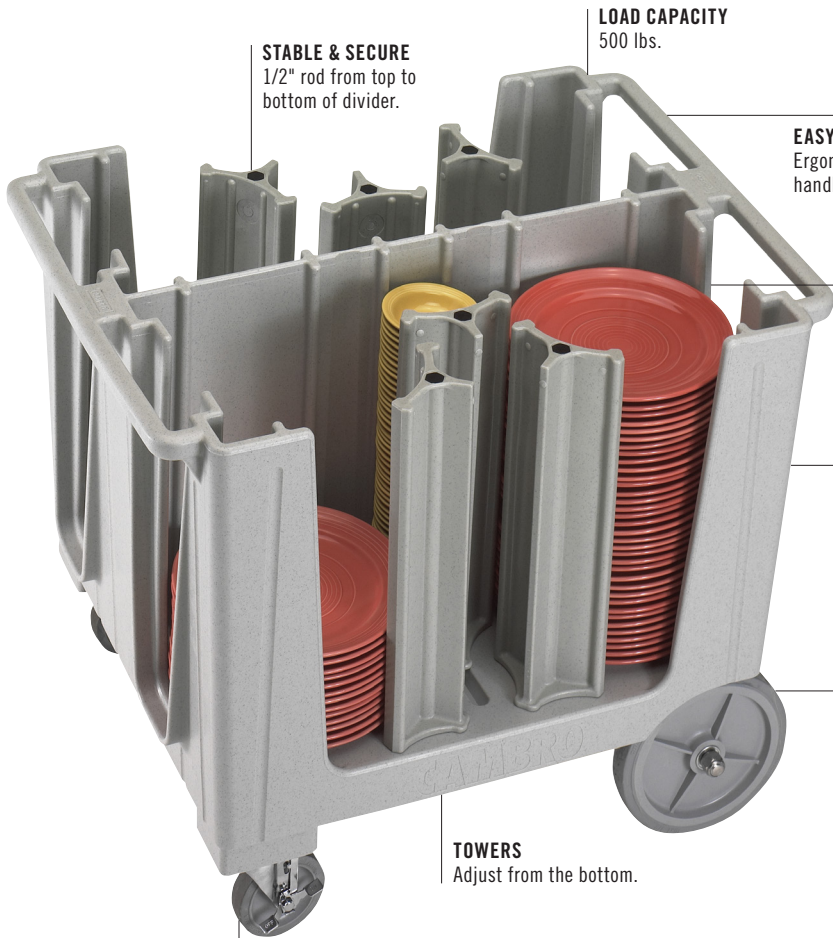
2 columns: 9<sup>1</sup>/<sub>4</sub>" to 13" diam. (60 each)  
5 columns: 4<sup>5</sup>/<sub>8</sub>" to 5<sup>1</sup>/<sub>4</sub>" (45 each)  
Total Capacity: 345



3 columns: 7<sup>1</sup>/<sub>4</sub>" to 9" diam. (60 each)  
5 columns: 4<sup>5</sup>/<sub>8</sub>" to 5<sup>1</sup>/<sub>4</sub>" (45 each)  
Total Capacity: 405



2 columns: 7<sup>1</sup>/<sub>4</sub>" to 9" diam. (60 each)  
2 columns: 5<sup>1</sup>/<sub>2</sub>" to 7" (45 each)  
4 columns: 4<sup>5</sup>/<sub>8</sub>" to 5<sup>1</sup>/<sub>4</sub>" (45 each)  
Total Capacity: 390



**STABLE & SECURE**  
1/2" rod from top to bottom of divider.

**LOAD CAPACITY**  
500 lbs.

**EASY TO MANEUVER**  
Ergonomic molded-in handles on both ends.

**HOLDING CAPACITY**  
Six 19<sup>1</sup>/<sub>2</sub>" storage columns hold 45-60 plates per stack.

**EXTREMELY DURABLE**  
Heavy duty polyethylene construction protects china from chipping. Won't chip, crack or rust.

**REAR WHEELS**  
10" non-marking Easy Wheels.

**TOWERS**  
Adjust from the bottom.

**FRONT CASTERS**  
5" swivel with brake.



Vinyl cover included with every dolly for sanitary storage.

|   |
|---|
| <b>ADCS</b>   |
| <b>NUMBER OF TOWERS:</b> 6  |
| <b>PLATES PER COLUMN:</b> Approximately 45-60   |
| <b>W</b> 28 <sup>3</sup> / <sub>8</sub> " <b>x</b> L 37 <sup>3</sup> / <sub>8</sub> " <b>x</b> H 31 <sup>7</sup> / <sub>8</sub> " |
| <b>LIST PRICE EACH:</b> \$ 1,765.00   |
| <b>Case Pack:</b> 1   |
| <b>InStock Colors:</b> Black (110), Speckled Gray (480).  |

# COMPACT ADJUSTABLE DISH CADDY S-SERIES

- Space saving design holds dishes of various sizes without compromising capacity.
- Lightweight, easy to maneuver and access from all four sides.

**Color:** Speckled Gray (480).

**5" Casters:** 2 rigid, 2 swivel with brake.

**Note:** Cannot be used to store square, rectangular or oval plates.

Compact Adjustable Dish Caddy is covered by U.S. Patent 10,321,778 B2. CamLever Tower is covered by U.S. Patent D844, 928 S and D852,450 S.

Vinyl cover included. Not NSF Listed.



**Holds plates and bowls from 4<sup>5</sup>/<sub>8</sub>" to 12"**



Conveniently move and secure CamLever Towers from the top.

Holds 4<sup>5</sup>/<sub>8</sub>" - 12" round plates/bowls only, 45 - 70 per stack, based on dish style and number of plates/bowls per stack.

Smooth surface with rounded corners is easy to keep clean.



Column storage height - 20<sup>1</sup>/<sub>2</sub>".

Maximum load capacity: 500 lbs.

Molded-in handles on 4 sides.

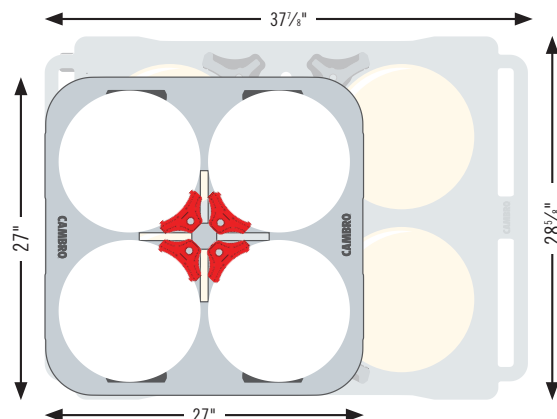
Single molded body made of heavy-duty, durable polyethylene won't rust, crack, dent or chip.



Includes protective storage cover with 3" x 5" inventory and/or event identification top pocket.

## Gain 30% More Floor Space

Compact Adjustable Dish Caddy compared to Standard Adjustable Dish Caddy S-Series.



## CamLever Tower

**ADCSC4**

**DESCRIPTION:**  
CamLever Tower - 4 Each

**OVERALL DIMENSIONS W x D x H:**  
2<sup>5</sup>/<sub>8</sub>" x 4<sup>3</sup>/<sub>8</sub>" x 23<sup>1</sup>/<sub>2</sub>"

**LIST PRICE PER CASE:** \$ 375.00

**Case Pack:** 4



Conveniently install additional CamLever Towers to convert the ADCSC to an ADCSC8PKG (8-tower) or an ADCSC12PKG (12-tower) model, holding new dish sizes.



# COMPACT ADJUSTABLE DISH CADDY S-SERIES



Model: ADCSC, 4 Towers

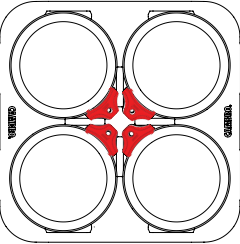


Plate sizes: 9 1/4" to 12" diam.  
Stacks of Plates: 4  
Total Capacity: 280

Model: ADCSC8PKG, 8 Towers

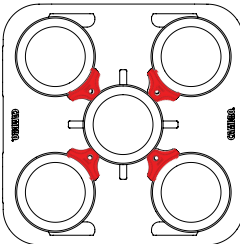


Plate sizes: 9" diam.  
Stacks of Plates: 5  
Total Capacity: 350

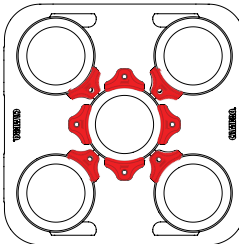


Plate sizes: 7 3/4" to 8 3/4" diam.  
Stacks of Plates: 5  
Total Capacity: 350

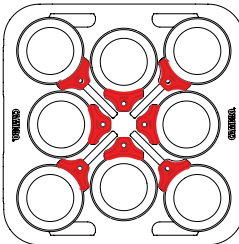


Plate sizes: 5 3/4" to 7 1/2" diam.  
Stacks of Plates: 8  
Total Capacity: 560

Model: ADCSC12PKG, 12 Towers

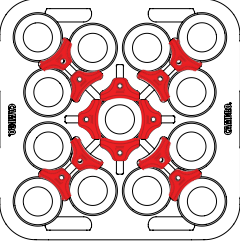


Plate sizes: 4 5/8" diam.  
Stacks of Plates: 16  
Total Capacity: 1,120

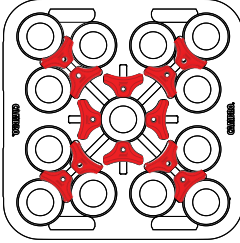


Plate sizes: 4 3/4" to 5 1/4" diam.  
Stacks of Plates: 13  
Total Capacity: 910

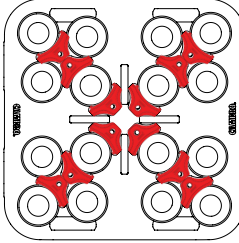


Plate sizes: 5 1/2" diam.  
Stacks of Plates: 13  
Total Capacity: 910



ADCSC

**DESCRIPTION:**  
Adjustable Dish Caddy, 4 Towers

**PLATE SIZE RANGE (ROUNDS):**  
9" to 12"

**OVERALL DIMENSIONS W x D x H:**  
27" x 27" x 31 3/4"

**LIST PRICE EACH:** \$ 1,485.00

**Case Pack:** 1 Ships in 1 box.



ADCSC8PKG

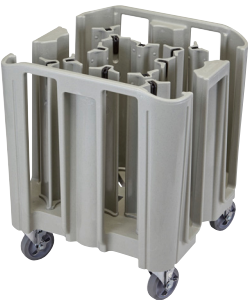
**DESCRIPTION:**  
Adjustable Dish Caddy, 8 Towers

**PLATE SIZE RANGE (ROUNDS):**  
5 3/4" to 8 3/4"

**OVERALL DIMENSIONS W x D x H:**  
27" x 27" x 31 3/4"

**LIST PRICE EACH:** \$ 1,860.00

**Case Pack:** 1 Ships in 2 boxes.



ADCSC12PKG

**DESCRIPTION:**  
Adjustable Dish Caddy, 12 Towers

**PLATE SIZE RANGE (ROUNDS):**  
4 5/8" to 5 1/2"

**OVERALL DIMENSIONS W x D x H:**  
27" x 27" x 31 3/4"

**LIST PRICE EACH:** \$ 2,230.00

**Case Pack:** 1 Ships in 3 boxes.

# POKER CHIP "FIXED" NON ADJUSTABLE DISH CADDIES

- Dividers are molded into the body in a standard poker chip design.
- Made of durable polyethylene that protects plates from chipping.
- Rear big wheels and front swivel casters provide smooth maneuvering.
- Open access from two sides for easy loading and unloading.
- Molded-in handles on both ends for easy transporting.

**Standard Caddy Colors:** Black (110), Slate Blue (401), Dark Brown (131), Granite Gray (191).

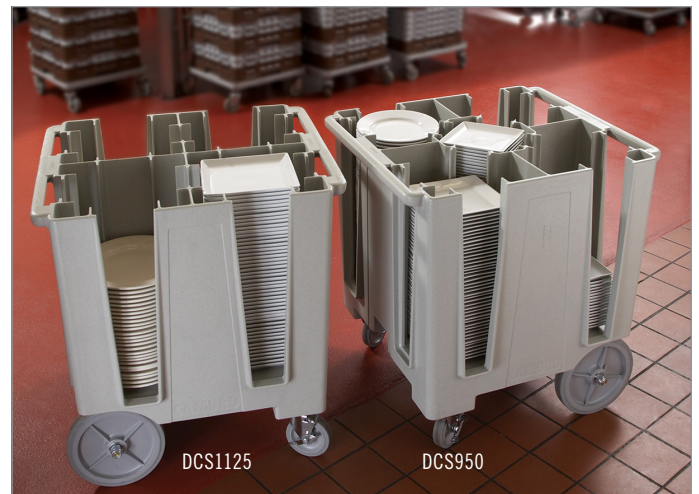
**Versa Caddy Colors:** Black (110), Dark Brown (131), Speckled Gray (480).

**Casters:** 2, 5" swivel with brakes and two 10" Easy Wheels.

**Loading Capacity:** 500 lbs.

Vinyl cover included. Not NSF listed.

DCS950 is covered by U.S. Patent D 603,120 S. DCS1125 is covered by U.S. Patent D 625,894.



## Standard Dish Caddies



### DC575

**PLATE SIZE RANGE (ROUNDS):**  
Up to 5¼"

**STACKS PER CADDY:** 6

**PLATES PER STACK:** 45-60

**OVERALL DIMENSIONS W x L x H:**  
32⅝" x 23½" x 31¼"

**LIST PRICE EACH:** \$ 1,435.00

**Case Pack:** 1



### DC700

**PLATE SIZE RANGE (ROUNDS):**  
5⅞" - 7"

**STACKS PER CADDY:** 6

**PLATES PER STACK:** 45-60

**OVERALL DIMENSIONS W x L x H:**  
32⅝" x 23½" x 31¼"

**LIST PRICE EACH:** \$ 1,435.00

**Case Pack:** 1



### DC825

**PLATE SIZE RANGE (ROUNDS):**  
7⅞" - 8⅞"

**STACKS PER CADDY:** 4

**PLATES PER STACK:** 45-60

**OVERALL DIMENSIONS W x L x H:**  
28¾" x 23¾" x 32"

**LIST PRICE EACH:** \$ 1,435.00

**Case Pack:** 1



### DC1225

**PLATE SIZE RANGE (ROUNDS):**  
11⅞" - 12¼"

**STACKS PER CADDY:** 4

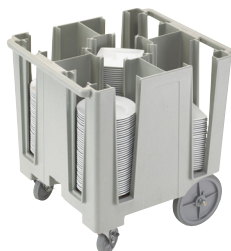
**PLATES PER STACK:** 45-60

**OVERALL DIMENSIONS W x L x H:**  
32¾" x 27½" x 32"

**LIST PRICE EACH:** \$ 1,525.00

**Case Pack:** 1

## Versa Dish Caddies



### DCS950

**PLATE SIZE RANGE (ROUNDS):**  
8⅞" - 9½"

**PLATE SIZE RANGE (SQUARES):**  
7¼" - 8"

**STACKS PER CADDY:** 5

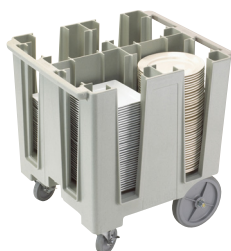
**PLATES PER STACK:** 45-60

**OVERALL DIMENSIONS W x L x H:**  
27" x 30½" x 31¼"

**LIST PRICE EACH:** \$ 1,385.00

**Case Pack:** 1

**InStock Colors:** Black (110), Speckled Gray (480).



### DCS1125

**PLATE SIZE RANGE (ROUNDS):**  
9⅞" - 11¼"

**PLATE SIZE RANGE (SQUARES):**  
8⅞" - 9½"

**STACKS PER CADDY:** 4

**PLATES PER STACK:** 45-60

**OVERALL DIMENSIONS W x L x H:**  
27" x 30½" x 31¼"

**LIST PRICE EACH:** \$ 1,440.00

**Case Pack:** 1

**InStock Colors:** Black (110), Speckled Gray (480).





# TRAY & DISH CARTS / TRAY & SILVERWARE CART

## Tray & Dish Cart

- Open storage compartment holds a wide variety of plates and trays.
- Use with or without detachable cutlery rack. Cutlery rack includes 12 each flatware cylinders.
- Made of easy-to-clean polyethylene that won't rust, peel or corrode.
- Molded-in handles and heavy-duty swivel casters ease maneuvering.

**Colors:** Slate Blue (401), Coffee Beige (157), Dark Brown (131), Granite Gray (191), Granite Green (192), Black (110).

**6" Casters:** All swivel, 2 with brake.

**Maximum load capacity:** 500 lbs.

Vinyl cover included. Not NSF listed.



| CODE     | DESCRIPTION               | DIMENSIONS<br>L x W x H | LIST<br>PRICE EA. |
|----------|---------------------------|-------------------------|-------------------|
| TDCR12   | Cart and rack combination | 38½" x 22¾" x 41¼"      | \$ 1,890.00       |
| TDC2029* | Cart only                 | 38½" x 22¾" x 34¼"      | 1,435.00          |
| CR12     | Cutlery rack only         | 33" x 22¾" x 9"         | 407.00            |
| FWC56    | Flatware cylinder         | —                       | 6.45              |

Case Pack: 1    FWC56 Case Pack: 12    \*TDC2029 is not available in Black (110).



TDCR12

## Adjustable Tray & Dish Cart

- Use to store a wide variety of plates and trays.
- Move two adjustable dividers into position easily to secure trays and plates.
- Made of durable polyethylene

that cushions plates and trays to prevent chipping.

- Easy to clean and won't dent, rust, chip or break.

**Colors:** Black (110), Slate Blue (401), Coffee Beige (157), Dark Brown (131), Granite Gray (191), Granite Green (192).

**6" Casters:** All swivel, 2 with brake.

**Maximum load capacity:** 500 lbs.

Vinyl cover included. Not NSF listed.



| CODE  | DESCRIPTION     | EXTERIOR DIMENSIONS<br>L x W x H | NUMBER OF<br>DIVIDERS | PLATES<br>PER COLUMN          | TRAYS<br>PER COLUMN    | LIST<br>PRICE EA. |
|-------|-----------------|----------------------------------|-----------------------|-------------------------------|------------------------|-------------------|
| TDC30 | Adjustable cart | 23¼" x 38½" x 34½"               | 2                     | Approximately<br>45-60 plates | 80 trays:<br>14" x 18" | \$ 1,885.00       |

Case Pack: 1



TDC30

## Tray & Silverware Cart

- Use to neatly organize trays and accessories for self-service.
- Includes 4 each 1/3 size and 4 each 1/6 size, 4" deep, clear Camwear® food pans to hold flatware, napkins and non-perishable condiments. 1/3 size, 4" deep holds 100 knives, 100 spoons or 80 forks.

**Colors:** Slate Blue (401), Coffee Beige (157), Dark Brown (131), Granite Gray (191), Granite Green (192), Black (110).

**6" Casters:** All swivel, 2 with brake.

**Maximum load capacity:** 500 lbs.

Vinyl cover included. Not NSF listed.



| CODE   | DESCRIPTION    | EXTERIOR DIMENSIONS<br>L x W x H | MAXIMUM<br>TRAY SIZE | TRAY<br>CAPACITY         | LIST<br>PRICE EA. |
|--------|----------------|----------------------------------|----------------------|--------------------------|-------------------|
| TC1418 | Cart with pans | 32¾" x 21¼" x 45½"               | 14" x 18"            | 180-200 in<br>two stacks | \$ 1,615.00       |

Case Pack: 1



TC1418



# KD SERVICE CART AND KD UTILITY CART



- Versatile, durable and economically-priced carts.
- Marine rails and lightly-textured polypropylene shelves keep contents in place.
- Aluminum uprights ensure stability.
- Ships "knocked down" to minimize shipping costs.
- Easy to assemble.

**Cart and Shelf Panel Set Colors:**  
Black (110), Speckled Gray (480).

**Trash Container and Silverware Holder Color:** Black (110).



**camguard®**

**ANTIMICROBIAL HANDLES**



| CODE                   | BC340KD                | BC331KD                |
|------------------------|------------------------|------------------------|
| DESCRIPTION            | Large Utility Cart     | Small Service Cart     |
| CASTER DIA./TYPE       | 5", 4 swivel, no brake | 4", 4 swivel, no brake |
| OVERALL DIM. L x D x H | 40" x 21¼" x 37½"      | 32⅞" x 16¼" x 38"      |
| SHELF DIM. L x D x H   | 31½" x 20½" x 11¾"     | 24⅜" x 15⅞" x 11¾"     |
| LOAD CAPACITY          | 400 lbs.               | 300 lbs.               |
| LIST PRICE EACH        | \$ 414.00              | \$ 279.00              |

Case Pack: 1 InStock Colors: Black (110), Speckled Gray (480).



## Optional Accessories



| CODE            | BC331KDTC              | BC331KDSh                  | BC340KDP  |
|-----------------|------------------------|----------------------------|---|
| DESCRIPTION     | 8 gal. Trash container | 2.5 gal. Silverware holder | Single Shelf Panel Set for KD Large Utility Cart 1 side, 2 ends |
| DIM. W x D x H  | 13" x 9½" x 22"        | 13" x 9½" x 7¼"            | 31⅝" x 17¾" x 11¾"  |
| LIST PRICE EACH | \$ 113.75              | \$ 65.50                   | \$ 113.75   |

Case Pack: 1

# SERVICE CART PRO

- Ideal for front or back of house foodservice operations.
- Optional Quick Connect Bins provide extra storage while keeping items sanitary.
- Ergonomic, recessed handles are molded into both ends of the cart for easy maneuvering and a smaller footprint.
- Durable, one-piece polyethylene construction. Easy to clean.
- Shelves feature raised ridges to protect surface against heat.

Colors: Black (110), Dark Brown (131), Charcoal Gray (615).

Total weight capacity: 600 lbs., 200 lbs. per shelf.

Patent applied for



Heavy-duty, non-marking 6" plate casters.



| CODE                        | DESCRIPTION  | EXTERIOR DIM.<br>L x W x H | LIST<br>PRICE EA. |
|-----------------------------|--|----------------------------|-------------------|
| <b>Service Cart Pro</b>     |  |                            |                   |
| SC337                       | Standard Service Cart<br>Casters: 2 rigid, 2 swivel with brake | 41½" x 23⅝" x 37"          | \$ 1,325.00       |
| SC337S                      | Standard Service Cart<br>Casters: 4 swivel with brake          | 41½" x 23⅝" x 37"          | 1,365.00          |
| <b>Optional Accessories</b> |  |                            |                   |
| QCSB                        | Small Quick Connect Bin  | 16" x 7" x 12⅜"            | 118.00            |
| QCTB                        | Large Quick Connect Bin  | 16" x 7" x 21⅜"            | 134.75            |

Case Pack: 1



QCTB



QCSB



# SERVICE CARTS

- All-purpose versatile, durable and dependable workhorses.
- Ideal for use on the receiving dock or setting up and bussing tables.
- Made of one-piece, polyethylene with molded-in handles and shelves.
- Choose from models with open or enclosed sides.

**Colors:** Black (110), Slate Blue (401), Dark Brown (131), Coffee Beige (157), Granite Gray (191).

BC225, BC2254S, BC11TC and BC1115SH can be shipped by parcel carrier.



## Open Carts



### BC225

**CASTER DIA./TYPE:**  
3", 2 fixed, 2 swivel, 1 w/brake

**OVERALL DIMENSIONS** L x D x H:  
28" x 16" x 32¼"

**SHELF DIMENSIONS** L x D x H:  
21¼" x 15½" x 11¼"

**LOAD CAPACITY:** 350 lbs.

**LIST PRICE EACH:** \$ 750.00

**Case Pack:** 1



### BC2254S

**CASTER DIA./TYPE:**  
3", 4 swivel, 1 w/brake

**OVERALL DIMENSIONS** L x D x H:  
28" x 16" x 32¼"

**SHELF DIMENSIONS** L x D x H:  
21¼" x 15½" x 11¼"

**LOAD CAPACITY:** 350 lbs.

**LIST PRICE EACH:** \$ 775.00

**Case Pack:** 1



### BC230

**CASTER DIA./TYPE:**  
5", 2 fixed, 2 swivel, 1 w/brake

**OVERALL DIMENSIONS** L x D x H:  
33¾" x 20" x 34½"

**SHELF DIMENSIONS** L x D x H:  
27" x 19½" x 11¼"

**LOAD CAPACITY:** 500 lbs.

**LIST PRICE EACH:** \$ 950.00

**Case Pack:** 1



### BC2304S

**CASTER DIA./TYPE:**  
5", 4 swivel, 1 w/brake

**OVERALL DIMENSIONS** L x D x H:  
33¾" x 20" x 34½"

**SHELF DIMENSIONS** L x D x H:  
27" x 19½" x 11¼"

**LOAD CAPACITY:** 500 lbs.

**LIST PRICE EACH:** \$ 975.00

**Case Pack:** 1



### BC235

**CASTER DIA./TYPE:**  
5", 2 fixed, 2 swivel, 1 w/brake

**OVERALL DIMENSIONS** L x D x H:  
37¼" x 21½" x 34½"

**SHELF DIMENSIONS** L x D x H:  
31½" x 20¾" x 11½"

**LOAD CAPACITY:** 500 lbs.

**LIST PRICE EACH:** \$ 1,030.00

**Case Pack:** 1



### BC2354S

**CASTER DIA./TYPE:**  
5", 4 swivel, 1 w/brake

**OVERALL DIMENSIONS** L x D x H:  
37¼" x 21½" x 34½"

**SHELF DIMENSIONS** L x D x H:  
31½" x 20¾" x 11½"

**LOAD CAPACITY:** 500 lbs.

**LIST PRICE EACH:** \$ 1,055.00

**Case Pack:** 1



### BC330

**CASTER DIA./TYPE:**  
5", 2 fixed, 2 swivel, 1 w/brake

**OVERALL DIMENSIONS** L x D x H:  
33¾" x 20" x 34½"

**SHELF DIMENSIONS** L x D x H:  
27" x 18½" x 11¼"

**LOAD CAPACITY:** 500 lbs.

**LIST PRICE EACH:** \$ 1,025.00

**Case Pack:** 1



### BC3304S

**CASTER DIA./TYPE:**  
5", 4 swivel, 1 w/brake

**OVERALL DIMENSIONS** L x D x H:  
33¾" x 20" x 34½"

**SHELF DIMENSIONS** L x D x H:  
27" x 18½" x 11¼"

**LOAD CAPACITY:** 500 lbs.

**LIST PRICE EACH:** \$ 1,045.00

**Case Pack:** 1

## Optional Accessories

| CODE                 | BC11TC*                 | BC1115SH*                   |
|----------------------|-------------------------|-----------------------------|
| DESCRIPTION          | 11 gal. trash container | 1.75 gal. silverware holder |
| DIMENSIONS W x D x H | 13¾" x 8⅞" x 21⅞"       | 14½" x 6" x 5⅞"             |
| LIST PRICE EACH      | \$ 110.00               | \$ 97.55                    |

**Case Pack:** 1 \*BC11TC & BC1115SH will not fit KD Service or Utility Carts. BC11TC & BC1115SH are available in Black (110) and Dark Brown (131).



BC11TC



BC1115SH




# CAMBOX® BUS BOXES

## Regal




| CODE            | 1120CBR   | 1520CBR  |
|-----------------|---|--|
| DESCRIPTION     | Four compartment cutlery box  | 15" x 20" Cambox   |
| DIM. W x L x H  | 11 <sup>3</sup> / <sub>16</sub> " x 20 <sup>7</sup> / <sub>16</sub> " x 3 <sup>3</sup> / <sub>4</sub> " | 15 <sup>5</sup> / <sub>16</sub> " x 19 <sup>15</sup> / <sub>16</sub> " x 4 <sup>15</sup> / <sub>16</sub> " |
| LIST PRICE EACH | \$ 30.80  | \$ 31.50   |

Case Pack: 12    Colors: Black (110), Dark Brown (131). 



| CODE            | 21155CBR  | 21157CBR  | 1722CBR   |
|-----------------|---|---|---|
| DESCRIPTION     | 15" x 21" x 5" Cambox   | 15" x 21" x 7" Cambox   | 17" x 22" Cambox  |
| DIM. W x L x H  | 15 <sup>1</sup> / <sub>4</sub> " x 20 <sup>3</sup> / <sub>4</sub> " x 4 <sup>15</sup> / <sub>16</sub> " (includes handle) | 15 <sup>3</sup> / <sub>16</sub> " x 20 <sup>3</sup> / <sub>16</sub> " x 6 <sup>15</sup> / <sub>16</sub> " | 16 <sup>7</sup> / <sub>8</sub> " x 21 <sup>7</sup> / <sub>8</sub> " x 4 <sup>3</sup> / <sub>4</sub> " |
| COVER           | 2115CBCR  | 2115CBCR  | 1722CBCP  |
| LIST PRICE EACH | \$ 36.95  | \$ 42.60  | \$ 40.95  |

Case Pack: 12    Colors: Black (110), Dark Brown (131). 

## Poly



| CODE            | 415CBP   | 912CBP   | 1120CBP  | 1520CBP  | 1520CBPF*  |
|-----------------|--|--|--|--|--|
| DESCRIPTION     | Cutlery box  | Utility box  | 11" x 20" Cambox   | 15" x 20" Cambox   | 15" x 20" Cambox   |
| DIM. W x L x H  | 4 <sup>7</sup> / <sub>16</sub> " x 14 <sup>3</sup> / <sub>16</sub> " x 4 <sup>1</sup> / <sub>8</sub> " | 9 <sup>1</sup> / <sub>16</sub> " x 12 <sup>1</sup> / <sub>16</sub> " x 5 <sup>1</sup> / <sub>8</sub> " | 11 <sup>3</sup> / <sub>8</sub> " x 20 <sup>7</sup> / <sub>16</sub> " x 3 <sup>3</sup> / <sub>4</sub> " | 15 <sup>5</sup> / <sub>16</sub> " x 19 <sup>15</sup> / <sub>16</sub> " x 4 <sup>15</sup> / <sub>16</sub> " | 15 <sup>5</sup> / <sub>16</sub> " x 19 <sup>15</sup> / <sub>16</sub> " x 4 <sup>15</sup> / <sub>16</sub> " |
| COVER           | —  | —  | —  | 1520CBCP   | 1520CBCP   |
| LIST PRICE EACH | \$ 11.00   | \$ 14.90   | \$ 23.80   | \$ 24.50   | \$ 24.50   |

Case Pack: 12    Colors: Black (110), Dark Brown (131), Light Gray (180).  
InStock Color: Light Gray (180).    \*1520CBPF is identical to 1520CBP except the internal surface is flat.



| CODE            | 1621CBP   | 21155CBP  | 21157CBP  | 1722CBP   |
|-----------------|---|---|---|---|
| DESCRIPTION     | 15" x 20" Cambox  | 15" x 21" x 5" Cambox   | 15" x 21" x 7" Cambox   | 17" x 22" Cambox  |
| DIM. W x L x H  | 15 <sup>5</sup> / <sub>8</sub> " x 20 <sup>1</sup> / <sub>2</sub> " x 4 <sup>7</sup> / <sub>8</sub> " | 15 <sup>1</sup> / <sub>4</sub> " x 20 <sup>3</sup> / <sub>4</sub> " x 4 <sup>15</sup> / <sub>16</sub> " (includes handle) | 15 <sup>3</sup> / <sub>16</sub> " x 20 <sup>3</sup> / <sub>16</sub> " x 6 <sup>15</sup> / <sub>16</sub> " | 16 <sup>7</sup> / <sub>8</sub> " x 21 <sup>7</sup> / <sub>8</sub> " x 4 <sup>3</sup> / <sub>4</sub> " |
| COVER           | —   | 2115CBCP  | 2115CBCP  | 1722CBCP  |
| LIST PRICE EACH | \$ 37.10  | \$ 27.65  | \$ 29.80  | \$ 29.80  |

Case Pack: 12    Colors: Black (110), Dark Brown (131), Light Gray (180).    InStock Color: Light Gray (180).

## Covers



| CODE            | 1520CBCP                               | 1722CBCP   | 2115CBCP  | 2115CBR   |
|-----------------|--|--|---|---|
| DIM. W x L      | 16" x 20 <sup>1</sup> / <sub>2</sub> " | 17 <sup>3</sup> / <sub>16</sub> " x 22 <sup>3</sup> / <sub>8</sub> " | 15 <sup>1</sup> / <sub>2</sub> " x 20 <sup>1</sup> / <sub>2</sub> " | 15 <sup>1</sup> / <sub>2</sub> " x 20 <sup>1</sup> / <sub>2</sub> " |
| LIST PRICE EACH | \$ 19.73                               | \$ 35.48   | \$ 19.85  | \$ 19.25  |

Case Pack: 12    Color: White (148). 



# CAMSHELVING® HYGIENIC DRYING RACKS



- Keep tray line and warewashing areas organized and prevent wet stacking by storing newly washed products upright for faster drying before storing.
- Non-corrosive, break resistant and easy to assemble.
- Mobile racks allow for easy floor clean up and maneuverability.
- Drying cradles are removable and are high temperature dishwasher safe.
- Combine individual drying cradles to build custom drying racks on 24" deep Camshelving units.
- Lifetime warranty against rust and corrosion on posts and traverses.
- Drying Cradles are made of high impact ABS material.

**\*Camshelving Premium Series Color:**  
Speckled Gray (480).

**\*\*Drying Cradle Color:** Soft Gray (151).

## Casters:

**4 Premium Casters:** (2 Swivel with Total Locking Brake, 2 Swivel with No Brake).



## Vertical Drying Rack

- Securely holds various sizes of trays, cutting boards, baking sheet pans, lids and plates 8" to 13.5".
- Drying Cradles are installed directly onto shelf traverses.
- Fits 24" shelves.

7-Slot Drying Cradle is covered by  
U.S. Patent D 663,912 S.



CSDR7  
7-Slot Drying Cradle  
Width Per Slot: 1 1/16"



| CODE                        | DESCRIPTION          | DIMENSIONS<br>D x L x H    | HOLDING<br>CAPACITY | CASE<br>PACK | LIST<br>PRICE EA.      |
|-----------------------------|----------------------|----------------------------|---------------------|--------------|------------------------|
| <b>Camshelving Premium*</b> |                      |                            |                     |              |                        |
| CPMU244875DRPKG             | Vertical drying rack | 24" x 48" x 75"            | 84 trays            | 1            | \$ 1,895.00            |
| CPMU246075DRPKG             | Vertical drying rack | 24" x 60" x 75"            | 105 trays           | 1            | 2,130.00               |
| <b>Drying Cradles**</b>     |                      |                            |                     |              |                        |
| CSDR7                       | 7-Slot drying cradle | 23 1/2" x 10 1/4" x 3 3/4" |                     | 1            | 75.25                  |
| CSDR73                      | 7-Slot drying cradle | 23 1/2" x 10 1/4" x 3 3/4" |                     | 3            | 226.00<br>(Case price) |

Drying Cradles fit on Camshelving Premium Series, mobile or stationary 24" deep shelves to 72" in length.

**Package Includes:** Pre-assembled mobile post kits, 6 traverses for each model, 12 or 15 drying cradles and premium swivel casters with total locking brake. Assembly required.



CPMU244875DRPKG  
Camshelving Premium

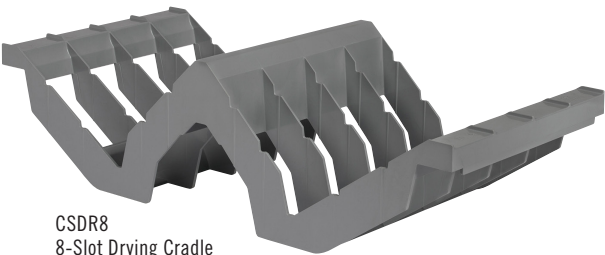
# CAMSHELVING® HYGIENIC DRYING RACKS



## Angled Drying Rack

- Securely holds up to 128 meal delivery Pellets/Bases or a variety of food pan sizes, pots and kitchen wares.
- Drying Cradles are installed directly onto shelf traverses.
- Fits 24" shelves.

\*Camshelving Premium Series Color: Speckled Gray (480).  
\*\*Drying Cradle Color: Soft Gray (151).  
8-Slot Drying Cradle is covered by U.S. Patent D739,989 S.



CSDR8  
8-Slot Drying Cradle  
Width Per Slot: 2 3/8"

| CODE                        | DESCRIPTION          | DIMENSIONS<br>D x L x H      | HOLDING<br>CAPACITY                          | CASE<br>PACK | LIST<br>PRICE EA.      |
|-----------------------------|----------------------|------------------------------|--|--------------|------------------------|
| <b>Camshelving Premium*</b> |                      |                              |  |              |                        |
| CPMU244875PDPKG             | Angled drying rack   | 24" x 48" x 75"              | 128 pellets and bases or 16 GN 1/1 food pans | 1            | \$ 2,220.00            |
| <b>Drying Cradles**</b>     |                      |                              |  |              |                        |
| CSDR8                       | 8-Slot drying cradle | 23 1/16" x 10 3/8" x 6 5/16" |  | 1            | 60.50                  |
| CSDR84                      | 8-Slot drying cradle | 23 3/16" x 10 3/8" x 6 5/16" |  | 4            | 242.00<br>(Case price) |

Individual Drying Cradles fit on Camshelving Premium Series 24" deep shelves only, mobile or stationary.  
**Package Includes:** Pre-assembled mobile post kits, 8 traverses, 16 drying cradles and premium swivel casters with total locking brake. Assembly required.

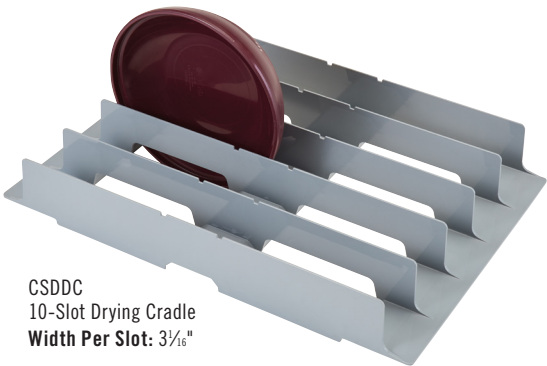


CPMU244875PDPKG  
Camshelving Premium

## Dome Drying Rack

- Securely holds 100 meal delivery domes.
- Drying Cradles are installed directly onto shelf traverses.
- Fits 24" shelves.

\*Camshelving Premium Series Color: Speckled Gray (480).  
\*\*Drying Cradle Color: Soft Gray (151).  
10-Slot Drying Cradle is covered by U.S. Patent D 736,488 S.



CSDDC  
10-Slot Drying Cradle  
Width Per Slot: 3 1/8"

| CODE                        | DESCRIPTION           | DIMENSIONS<br>D x L x H    | HOLDING<br>CAPACITY | CASE<br>PACK | LIST<br>PRICE EA.      |
|-----------------------------|-----------------------|----------------------------|---------------------|--------------|------------------------|
| <b>Camshelving Premium*</b> |                       |                            |                     |              |                        |
| CPMU243675DDPKG             | Dome drying rack      | 24" x 36" x 75"            | 100 domes           | 1            | \$ 1,950.00            |
| <b>Drying Cradles**</b>     |                       |                            |                     |              |                        |
| CSDDC24                     | 10-slot drying cradle | 23 1/2" x 16 2/3" x 3 3/8" |                     | 1            | 87.50                  |
| CSDDC245                    | 10-slot drying cradle | 23 1/2" x 16 2/3" x 3 3/8" |                     | 5            | 434.00<br>(Case price) |

Individual Drying Cradles fit on Camshelving Premium 24" deep shelves only, mobile or stationary.  
**Package Includes:** Pre-assembled mobile post kits, 10 traverses, 10 drying cradles and premium swivel casters with total locking brake. Assembly required.



CPMU243675DDPKG  
Camshelving Premium