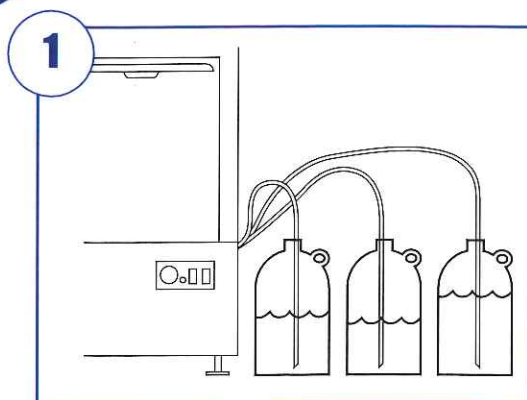
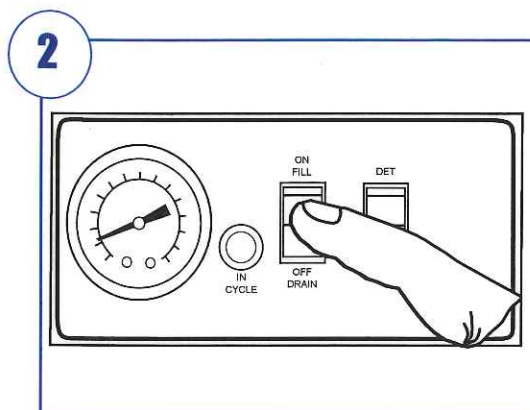




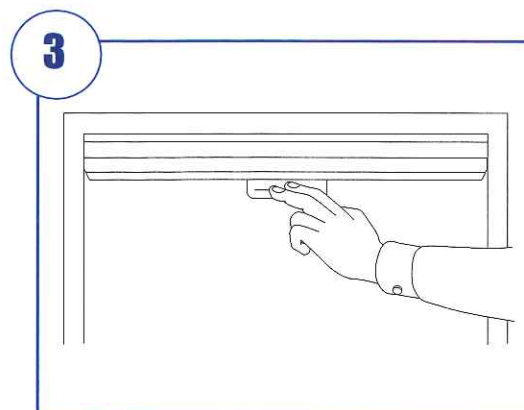
DAILY OPERATION



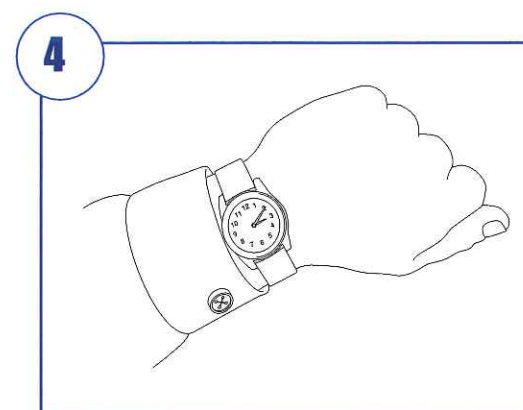
1 Check chemical levels in containers.



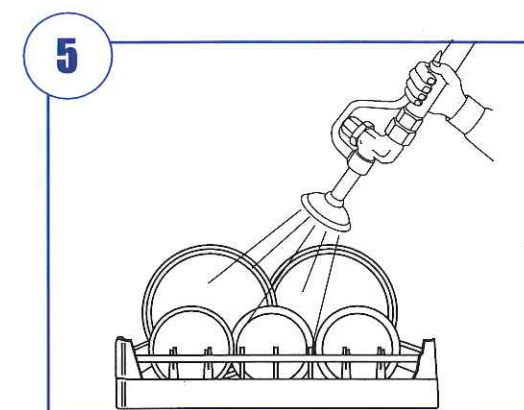
2 Flip "On-fill/Off-drain" switch to "On-fill" position.



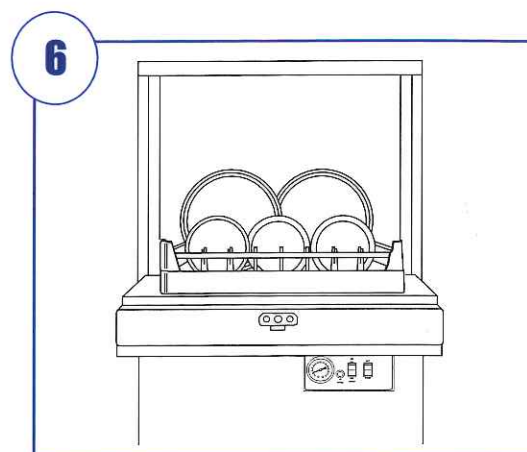
3 Close and latch door, tank will fill.



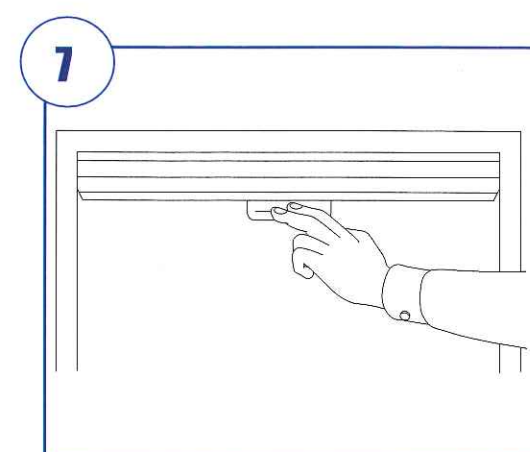
4 Wait 10 minutes for temperature gauge to read 150°F/66°C.



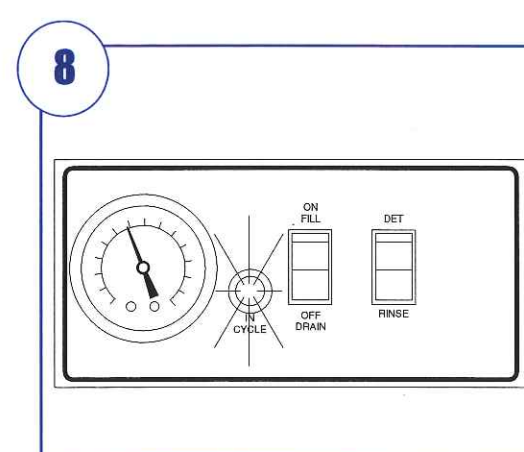
5 Prescrap wares and load into rack.



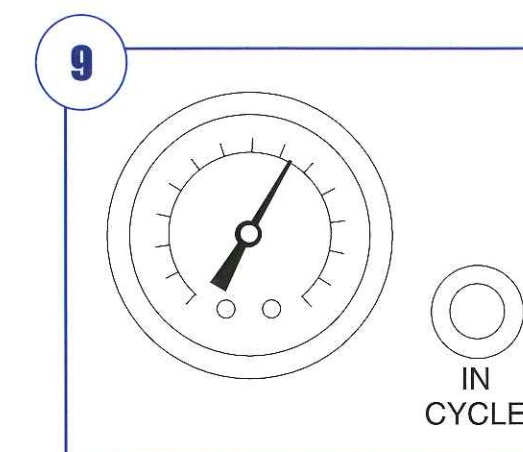
6 Load rack into dishwasher.



7 Close and latch door.



8 Green in-cycle light comes on.



9 Final rinse temperature should be a minimum of 180°F/82°C during the final rinse. WASH CYCLE IS EXTENDED IF BOOSTER IS NOT UP TO TEMPERATURE.

**CYCLE IS COMPLETE
WHEN THE GREEN LIGHT
GOES OUT.**