



Grab n go!
CONVENIENCE



NEW!



TOAM | Open Air Merchandisers 30 | 36 | 48 | 72



- Hydrocarbon Refrigerant
- LED Illuminated Shelving
- Built-in Night Cover
- RCU Technology



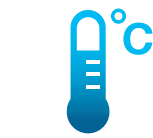
2001 East Terra Lane, O'Fallon, MO 63366-4434, USA [ph | 636.240.2400](tel:636.240.2400) [toll free | 800.325.6152](tel:800.325.6152) [email | truesales@truemfg.com](mailto:truesales@truemfg.com)
truemfg.com

NEW!

TOAM | Features + Benefits

True harnesses the power of R290 hydrocarbon refrigerant.

R290
Hydrocarbon refrigerant is the next step, not only in terms of environmental responsibility, but also better, more efficient commercial refrigeration equipment.



Consistent Temperature



Long-Term Reliability



Energy Savings



Better Product Presentation

TOAM units offer a 900% increase in lighting than our previous air curtains, providing much greater product visibility. Additionally, air curtains have proven to increase sales through customer impulse purchases.



Better for the Operator

R290 also has superior thermodynamic properties, resulting in quicker temperature recovery, fewer incidents of equipment breakdown, and when combined with the latest components, significantly lower energy. TOAM units on average use 15% less energy than other Air Curtain Manufacturers.



Better for the Environment

R290 is a much more environmentally friendly gas than those traditionally used in commercial refrigeration (R134a & R404A), with zero ozone depletion potential (ODP), & a global warming potential (GWP) of just three.



Global Warming Potential of Refrigerants



NOTE True "HC" products significantly reduce energy consumption, and ALL products are covered, as standard, by an industry-leading 3 Years Parts & Labor Warranty and 7 year Compressor Warranty.



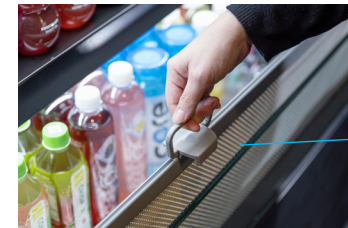
Put Your Freshness on Display

Temperature is at the heart of every True product, and our selection of Open Air Merchandisers are no exception.



LED illuminated Shelving

Each shelf is illuminated for enhanced product presentation and visibility.



Built-in Night Cover

Helps keep cool air inside and reduce energy consumption during non service hours.

natural refrigerant. Hydrocarbon Refrigerant

Equipped with R290 refrigerant that has a zero ozone depletion rating and a Global warming potential rating of three (3).



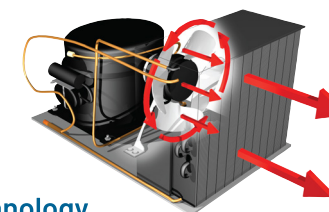
Backlit Signage, Custom Graphics

Available on select models and customizable to your brand image.



Impulse Buys

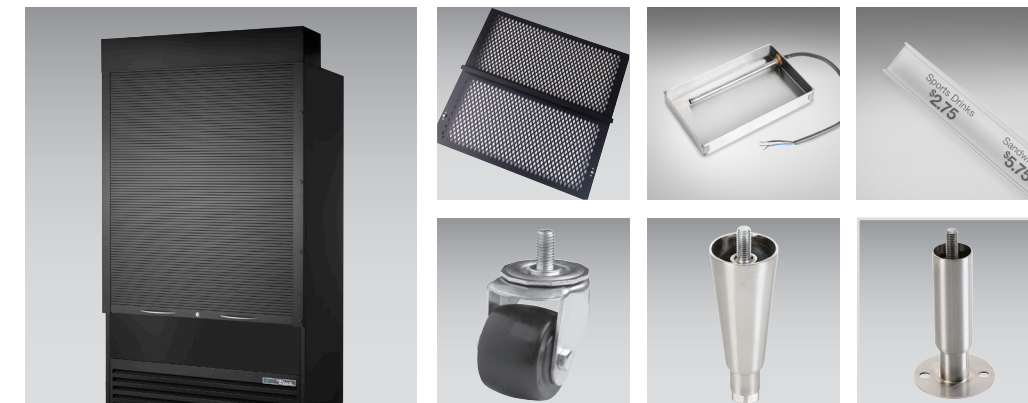
Air curtains make it easy to view and shop for products.



RCU Technology

Allows for the reversal of the condensing fan motor helping to keep the coil clean and reducing energy consumption by as much as 20%.

Accessories and Mounting Options



TOAM | Accessories

- Locking security cover (only on solid side versions) white/silver/black
- Vandal Panel (only on solid side versions)
- Heated condensate pan
- Pricing strips

TOAM | Mounting Options

- 2 1/2", 4", 5" castors
- 6" Legs
- 6" Seismic Legs

TOAM | Available Models

Considering a Built-in?

Our TOAMs were intentionally engineered to match heights with our existing line of merchandisers.



TOAM-Solid Sides



TOAM-No Sign



TOAM-Glass Sides



TOAMs

GDM's



> Night Cover shown comes standard.

TOAM Solid Sides (w/sign panel)		
Model Name	Shelves	Dimensions (L X D X H)
TOAM-30-HC-TSL01	4	30 x 29 1/8 x 78 1/2
TOAM-36-HC-TSL01	4	36 x 29 1/8 x 78 1/2
TOAM-48-HC-TSL01	4	48 x 29 1/8 x 78 1/2
TOAM-72-HC-TSL01	8	72 x 29 1/8 x 78 1/2
TOAM Solid Sides (w/o sign panel)		
Model Name	Shelves	Dimensions (L X D X H)
TOAM-30-HC-NSL01	4	30 x 29 1/8 x 78 1/2
TOAM-36-HC-NSL01	4	36 x 29 1/8 x 78 1/2
TOAM-48-HC-NSL01	4	48 x 29 1/8 x 78 1/2
TOAM-72-HC-NSL01	8	72 x 29 1/8 x 78 1/2
TOAM Glass Sides (w/sign panel)		
Model Name	Shelves	Dimensions (L X D X H)
TOAM-30GS-HC-TSL01	4	30 x 29 1/8 x 78 1/2
TOAM-36GS-HC-TSL01	4	36 x 29 1/8 x 78 1/2
TOAM-48GS-HC-TSL01	4	48 x 29 1/8 x 78 1/2
TOAM-72GS-HC-TSL01	8	72 x 29 1/8 x 78 1/2



Units in above photo show custom lower front panel decal. Please contact factory for additional details.



DID YOU KNOW



Food to go continues to out-perform total dining out market.



Nearly three quarters of the population purchase food on-the-go at least once a week.



Speed + Convenience = NO DOORS!

TVM | True Visual Merchandisers



ENHANCED PRODUCT VISIBILITY



25% More Product Visibility
**(compared to GDM models)*

High Efficiency
(Hydrocarbon Refrigeration)

Increased Merchandising Space



TVM-48SL-HC-VM01



Stylishly DESIGNED

True Visual Merchandisers are an excellent choice for spot merchandising. The TVM's micro frame glass doors and no center mullion design, enhance product visibility, resulting in increased sales.



TVM-30-HC~VM03

FEATURES

- Integrated LED lighting.
- Ideal for in-aisle and end cap refrigeration applications.
- Micro frame glass doors. No center mullion for improved product visibility.
- Self Contained System.
- Hydrocarbon Refrigeration.

TVM | Models + Specifications



CAPABILITIES

Enjoy the visual appearance of an open air merchandiser combined with the high efficiency performance of the micro frame TVM models. Removing the center mullion increases merchandising space and overall product capacity.

REFRIGERATORS

Model	Width	Depth [†]	Height	Doors	Shelves	HP	Amps	Weight
TVM-30-HC~VM03	30 ⁷ / ₈ "	24"	54 ⁷ / ₈ "	2	4	1/5	2	255
TVM-36SL-HC~VM03	36"	21 ³ / ₈ "	54 ⁷ / ₈ "	2	4	1/4	2	260
TVM-48-HC~VM01	47 ¹ / ₄ "	29 ⁷ / ₈ "	78 ⁵ / ₈ "	2	8	1/2	10.5	520
TVM-48SL-HC~VM01	47 ¹ / ₈ "	25 ¹ / ₄ "	78 ³ / ₄ "	2	8	1/2	2	610
TVM-48SL-54-HC~VM03	47 ¹ / ₈ "	21 ³ / ₄ "	53 ³ / ₈ "	2	6	1/4	8.8	380
TVM-48SL-48-HC-VM01	46 ⁷ / ₈ "	21"	48"	2	6	1/5	2	315
TVM-30SL-HC-VM03	30 ⁷ / ₈ "	21 ³ / ₈ "	54 ⁷ / ₈ "	2	4	1/5	2	245



2001 East Terra Lane, O'Fallon, MO 63366-4434 p: 636.240.2400 f: 636.272.2408 toll free: 800.325.6152 parts toll free: 800.424.8783

truemfg.com



TDM 36 48 59 77

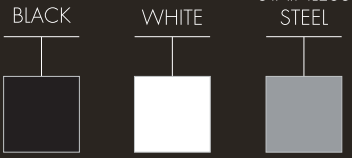
TRUE
DISPLAY
MERCHANTISERS



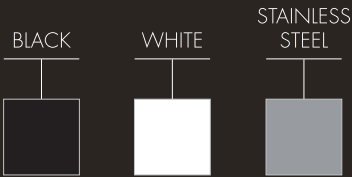
TRUE IS PROUD TO ANNOUNCE THE INTRODUCTION OF IT'S NEW GENERATION OF CURVED GLASS DISPLAY MERCHANDISERS,

THE TDM SERIES

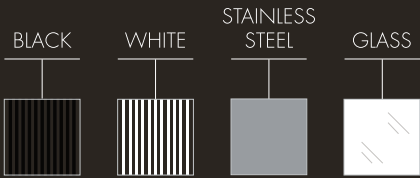
EXTERIOR



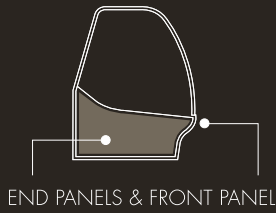
INTERIOR



SHELVES



CUSTOM DECO



NOMENCLATURE

TDM-R-77-GE/GE-B-W

E
F
H
I

A
B
C
D
G

- Ⓐ True Display Merchandiser
- Ⓑ Type: R-Refrigerator, DZ-Dual Zone, DC-Dry Case, CW-Chocolate/Wine
- Ⓒ Size: 36, 48, 59, 77
- Ⓓ End Type: GE-Standard Glass, ME-Mirrored Glass
- Ⓔ End Type: Left Position
- Ⓕ End Type: Right Position
- Ⓖ Color: B-Black, W-White, S-Stainless Steel
- Ⓗ Color: Exterior
- Ⓘ Color: Interior



The innovative TDM design marries the sophistication of a curved glass display with enhanced performance using the latest in environmentally friendly, extremely energy efficient hydrocarbon refrigeration systems.

True's new TDM series display merchandisers are ideally suited for high end interiors that demand premium materials and technical innovation.

natural refrigerant. HYDROCARBON ENERGY EFFICIENCY PERFORMANCE SAVINGS

True will have approximately 70% of the models we manufacture converted over to R290 hydrocarbon refrigerant by the end of 2016.



501718

2001 EAST TERRA LANE, O'FALLON, MO. 63366-4434, USA
WWW.TRUEMFG.COM 800.325.6152



The World's #1 Manufacturer of Glass Door Merchandisers

GDM

GDM | Glass Door Merchandisers

Multiple Sizes



GDM-49-HC-TSL01

- 1** Factory engineered, high capacity, factory balanced refrigeration systems. Refrigerators hold 33°F to 38°F and freezers hold -10°F for the best in food preservation in any conditions.
- 2** Factory engineered, self-contained, capillary tube system using environmentally friendly R290 hydrocarbon refrigerant that has zero (0) ozone depletion potential (ODP), and three (3) global warming potential (GWP).
- 3** Refrigerators have "Low E", double pane, thermal insulated glass door assembly. Freezers have triple pane thermal insulated assembly. Doors have powder coated extruded aluminum frame.
- 4** Exterior front - high quality, durable, powder coated metal. State of the art process insures a uniform, environmentally safe attractive finish.
- 5** Interior - attractive, NSF approved, white aluminum interior liner with stainless steel floor.
- 6** LED interior lighting provides more even lighting throughout the cabinet.
- 7** Entire cabinet structure is foamed-in-place using high density, polyurethane insulation that has zero ozone depletion potential (ODP) and zero global warming potential (GWP).



Multiple Sizes

Endless Applications

Hydrocarbon Refrigeration



DESIGN

True's new generation of GDMs continues the commitment to using the highest quality materials, matched with the latest in technical innovation and utilizing energy efficient, environmentally friendly hydrocarbon (R290) refrigeration systems. These qualities provide the user with colder product temperatures and lower utility costs in an attractive merchandiser that brilliantly displays packaged food and beverages.

Integrated LED Lighting

Custom backlit signage

Fully adjustable wire shelves



GDM

Energy Efficient

Enhanced Product Display

Refrigerator/Freezer Available

Available in white, black or stainless steel



GDM-26-HC-TSL01



GDM-49-HC-TSL01



GDM-72F-HC-TSL01



GDM-33CPT-54-HC

GDM-12-HC-TSL01

GDM-69-HC-LD



Advanced Refrigeration System



Adjustable Cantilever Shelving



Floor Rack for Optimal Airflow



FLM-54F-TSL01



Robust Top Hinge with Hold Open Feature



Rounded Handles vs. Pull Handles



Wire-Hide Doors



FLM | Full Length Merchandisers



REFRIGERATORS

MODEL	WIDTH	DEPTH†	HEIGHT	DOORS	HORSEPOWER	AMPS	WEIGHT
FLM-27~TSL01	27"	30 3/8"	79"	1	1/4	2.3	355
FLM-54~TSL01	53 7/8"	30 3/8"	79"	2	1/2	6.3	625
FLM-81~TSL01	80 3/4"	30 3/8"	79"	3	3/4	6.3	810

FREEZERS

MODEL	WIDTH	DEPTH†	HEIGHT	DOORS	HORSEPOWER	AMPS	WEIGHT
FLM-27F~TSL01	27"	30 3/8"	79"	1	3/4	7.2	385
FLM-54F~TSL01	53 7/8"	30 3/8"	79"	2	1/2	13.1	725
FLM-81F~TSL01	80 3/4"	30 3/8"	79"	3	3/4	14.2	975

† Depth does not include 1 1/8" (42 mm) for door handles.



Endless Case Look

Self Contained System

Hydrocarbon Refrigeration



Full height door for maximum product visibility

Mix medium temp and low temp units as needed

Integrated LED lighting

Fully adjustable cantilever shelves

FLM

Endless Case Look

Self Contained System

Hydrocarbon Refrigeration

natural refrigerant.

Available in: white, black or stainless steel

