



WORK TABLES

SS WORK TABLE WITH GALVANIZED STEEL UNDERSHELF (DSST-GS)



SS WORK TABLE WITH 5" BACKSPLASH AND GALVANIZED STEEL UNDERSHELF (DSST-BK)



Model	L	W	H	Max Load (top)	Max Load (bottom)
DSST-2424-GS	24"	24"	34"	330 lbs	110 lbs
DSST-2430-GS	30"	24"	34"	400 lbs	132 lbs
DSST-2436-GS	36"	24"	34"	400 lbs	132 lbs
DSST-2448-GS	48"	24"	34"	400 lbs	132 lbs
DSST-2460-GS	60"	24"	34"	375 lbs	110 lbs
DSST-2472-GS	72"	24"	34"	375 lbs	110 lbs
DSST-2484-GS	84"	24"	34"	400 lbs	132 lbs
DSST-2496-GS	96"	24"	34"	400 lbs	132 lbs

DSST-3012-GS	12"	30"	34"	265 lbs	100 lbs
DSST-3015-GS	15"	30"	34"	265 lbs	100 lbs
DSST-3018-GS	18"	30"	34"	265 lbs	100 lbs
DSST-3024-GS	24"	30"	34"	300 lbs	132 lbs
DSST-3030-GS	30"	30"	34"	375 lbs	132 lbs
DSST-3036-GS	36"	30"	34"	400 lbs	132 lbs
DSST-3048-GS	48"	30"	34"	400 lbs	132 lbs
DSST-3060-GS	60"	30"	34"	400 lbs	132 lbs
DSST-3072-GS	72"	30"	34"	375 lbs	110 lbs
DSST-3084-GS	84"	30"	34"	400 lbs	132 lbs
DSST-3096-GS	96"	30"	34"	400 lbs	132 lbs

Model	L	W	H*	Max Load (top)	Max Load (bottom)
DSST-2424-BK	24"	24"	34"	330 lbs	110 lbs
DSST-2430-BK	30"	24"	34"	400 lbs	132 lbs
DSST-2436-BK	36"	24"	34"	400 lbs	132 lbs
DSST-2448-BK	48"	24"	34"	400 lbs	132 lbs
DSST-2460-BK	60"	24"	34"	375 lbs	110 lbs
DSST-2472-BK	72"	24"	34"	375 lbs	110 lbs
DSST-2484-BK	84"	24"	34"	400 lbs	132 lbs
DSST-2496-BK	96"	24"	34"	400 lbs	132 lbs

DSST-3024-BK	24"	30"	34"	300 lbs	132 lbs
DSST-3030-BK	30"	30"	34"	375 lbs	132 lbs
DSST-3036-BK	36"	30"	34"	400 lbs	132 lbs
DSST-3048-BK	48"	30"	34"	400 lbs	132 lbs
DSST-3060-BK	60"	30"	34"	400 lbs	132 lbs
DSST-3072-BK	72"	30"	34"	375 lbs	110 lbs
DSST-3084-BK	84"	30"	34"	400 lbs	132 lbs
DSST-3096-BK	96"	30"	34"	400 lbs	132 lbs

*Height excludes 5" backsplash

We are a Canadian company that has built an excellent reputation throughout the years based on multiple factors that we are very proud of.

We have the best customer service you can ask for. Our dedicated employees take your needs into account and ensure that you will be given accurate information in a timely manner.

High quality is not an option, it's a standard. We only provide products that are reliable and long lasting. We pay particular attention to small details that will make our products better and easier to use.

We keep high levels of inventory across the country to ensure we have the products you need when you need them. Our warehouses are filled and ready to process and deliver your goods in a timely and efficient manner.

We offer experienced and unmatched after-sales service. Our team is here to answer your questions by offering a first class representation that is also supported by our warranty team.

CERTIFICATIONS



All of our products are NSF certified, unless specified otherwise. All of our sinks are CSA and NSF approved.

AUTOQUOTES



All of our products, along with their specifications, can be found on AutoQuotes.

STANDARD FEATURES

- Made with 18 gauge, 430 stainless steel (top)
- Galvanized steel legs and adjustable undershelf
- Easy to assemble
- Stronger and non-welded corners
- Hat channel on the bottom of 48" models and up

OPTIONAL ACCESSORIES

- Extra galvanized undershelf
- Set of swivel casters
- Brace bar kit
- Drawers
- Legs for 36" high table

SS WORK TABLE WITH STAINLESS STEEL UNDERSHELF (DSST-SS)



SS WORK TABLE WITH STAINLESS STEEL UNDERSHELF AND 5" BACKSPASH (DSST-BKSS)



Model	L	W	H	Max Load (top)	Max Load (bottom)
DSST-2424-SS	24"	24"	34"	330 lbs	110 lbs
DSST-2430-SS	30"	24"	34"	396 lbs	132 lbs
DSST-2436-SS	36"	24"	34"	396 lbs	132 lbs
DSST-2448-SS	48"	24"	34"	396 lbs	110 lbs
DSST-2460-SS	60"	24"	34"	375 lbs	110 lbs
DSST-2472-SS	72"	24"	34"	330 lbs	110 lbs
DSST-2484-SS	84"	24"	34"	396 lbs	132 lbs
DSST-2496-SS	96"	24"	34"	396 lbs	132 lbs

DSST-3012-SS	12"	30"	34"	265 lbs	88 lbs
DSST-3015-SS	15"	30"	34"	265 lbs	88 lbs
DSST-3018-SS	18"	30"	34"	265 lbs	88 lbs
DSST-3024-SS	24"	30"	34"	330 lbs	110 lbs
DSST-3030-SS	30"	30"	34"	396 lbs	132 lbs
DSST-3036-SS	36"	30"	34"	396 lbs	132 lbs
DSST-3048-SS	48"	30"	34"	396 lbs	132 lbs
DSST-3060-SS	60"	30"	34"	375 lbs	110 lbs
DSST-3072-SS	72"	30"	34"	330 lbs	110 lbs
DSST-3084-SS	84"	30"	34"	396 lbs	132 lbs
DSST-3096-SS	96"	30"	34"	396 lbs	132 lbs

Model	L	W	H*	Max Load (top)	Max Load (bottom)
DSST-2424-BKSS	24"	24"	34"	330 lbs	110 lbs
DSST-2430-BKSS	30"	24"	34"	396 lbs	132 lbs
DSST-2436-BKSS	36"	24"	34"	396 lbs	132 lbs
DSST-2448-BKSS	48"	24"	34"	396 lbs	132 lbs
DSST-2460-BKSS	60"	24"	34"	375 lbs	110 lbs
DSST-2472-BKSS	72"	24"	34"	330 lbs	110 lbs
DSST-2484-BKSS	84"	24"	34"	396 lbs	132 lbs
DSST-2496-BKSS	96"	24"	34"	396 lbs	132 lbs
DSST-3024-BKSS	24"	30"	34"	330 lbs	110 lbs
DSST-3030-BKSS	30"	30"	34"	396 lbs	132 lbs
DSST-3036-BKSS	36"	30"	34"	396 lbs	132 lbs
DSST-3048-BKSS	48"	30"	34"	396 lbs	132 lbs
DSST-3060-BKSS	60"	30"	34"	375 lbs	110 lbs
DSST-3072-BKSS	72"	30"	34"	330 lbs	110 lbs
DSST-3084-BKSS	84"	30"	34"	396 lbs	132 lbs
DSST-3096-BKSS	96"	30"	34"	396 lbs	132 lbs

*Height excludes 5" back splash

STANDARD FEATURES

- Made with 18 gauge, 430 stainless steel
- Stainless steel legs, undershelf, and bulletfeet
- Easy to assemble
- Stronger and 450 welded corners

OPTIONAL ACCESSORIES

- Extra stainless steel undershelf
- Set of swivel casters
- Brace bar kit
- Drawers
- Legs for 36" high table

STAINLESS STEEL WORK TABLE WITH POLYTOP (DSST-PT)**



**SPECIAL ORDER ITEM – CONTACT A REPRESENTATIVE

STANDARD FEATURES

- Made with 18 gauge, 430 stainless steel
- Undershelf for better stability
- Easy to assemble
- Cutting boards available in 0.75" and 1" thickness

Model	L	W	H	Max Load (top)	Max Load (bottom)
DSST-3036-PT	36"	30"	34"	400 lbs	132 lbs
DSST-3048-PT	48"	30"	34"	400 lbs	132 lbs
DSST-3060-PT	60"	30"	34"	400 lbs	132 lbs
DSST-3072-PT	72"	30"	34"	375 lbs	110 lbs

POLYTOP CUTTING BOARDS

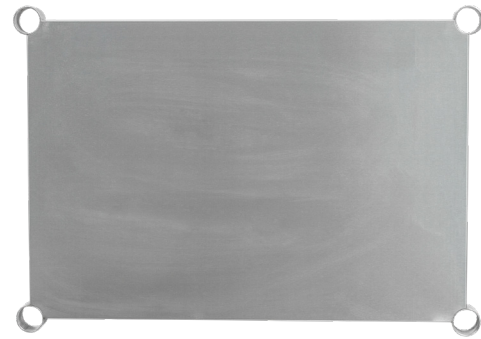
Model	L	W	Thickness
TCB-3036-19	36"	30"	0.75"
TCB-3048-19	48"	30"	0.75"
TCB-3060-19	60"	30"	0.75"
TCB-3072-19	72"	30"	0.75"
TCB-3036-25	36"	30"	1"
TCB-3048-25	48"	30"	1"
TCB-3060-25	60"	30"	1"
TCB-3072-25	72"	30"	1"



DID YOU KNOW?

Cutting boards should be washed and disinfected after each use. Simply cleaning with warm water and soap will not kill bacteria. To disinfect, you must use commercial-grade disinfectant or put the cutting boards in the dishwasher. Once the cutting boards have been thoroughly cleaned and disinfected, store them upright, not piled on top of each other.

STAINLESS STEEL UNDERSHELF (DUS-SS)



**DESIGNED FOR SS AND BKSS WORK TABLES

GALVANIZED STEEL UNDERSHELF (DUS-GS)



**DESIGNED FOR GS AND BK WORK TABLES

STANDARD FEATURES

- Made with high quality 18 gauge, 430 stainless steel
- Various sizes to fit your needs
- Welded corners

Model	L*	W*	Max Load
DUS-2424-SS	24"	24"	110 lbs
DUS-2430-SS	30"	24"	132 lbs
DUS-2436-SS	36"	24"	132 lbs
DUS-2448-SS	48"	24"	132 lbs
DUS-2460-SS	60"	24"	110 lbs
DUS-2472-SS	72"	24"	110 lbs
DUS-2484-SS	84"	24"	132 lbs
DUS-2496-SS	96"	24"	132 lbs
DUS-3012-SS	12"	30"	88 lbs
DUS-3015-SS	15"	30"	88 lbs
DUS-3018-SS	18"	30"	88 lbs
DUS-3024-SS	24"	30"	110 lbs
DUS-3030-SS	30"	30"	132 lbs
DUS-3036-SS	36"	30"	132 lbs
DUS-3048-SS	48"	30"	132 lbs
DUS-3060-SS	60"	30"	110 lbs
DUS-3072-SS	72"	30"	110 lbs
DUS-3084-SS	84"	30"	132 lbs
DUS-3096-SS	96"	30"	132 lbs

*Fits size of table

STANDARD FEATURES

- Made with galvanized steel
- Various sizes to fit your needs
- Non-welded corners

** Does not fit on Poly Top Tables

Model	L*	W*	Max Load
DUS-2424-GS	24"	24"	110 lbs
DUS-2430-GS	30"	24"	132 lbs
DUS-2436-GS	36"	24"	132 lbs
DUS-2448-GS	48"	24"	132 lbs
DUS-2460-GS	60"	24"	110 lbs
DUS-2472-GS	72"	24"	110 lbs
DUS-2484-GS	84"	24"	132 lbs
DUS-2496-GS	96"	24"	132 lbs
DUS-3012-GS	12"	30"	88 lbs
DUS-3015-GS	15"	30"	88 lbs
DUS-3018-GS	18"	30"	88 lbs
DUS-3024-GS	24"	30"	110 lbs
DUS-3030-GS	30"	30"	132 lbs
DUS-3036-GS	36"	30"	132 lbs
DUS-3048-GS	48"	30"	132 lbs
DUS-3060-GS	60"	30"	110 lbs
DUS-3072-GS	72"	30"	110 lbs
DUS-3084-GS	84"	30"	132 lbs
DUS-3096-GS	96"	30"	132 lbs

*Fits size of table

EQUIPMENT STAND WITH STAINLESS STEEL TOP, LEGS, AND UNDERSHELF (DSTAND-SS)



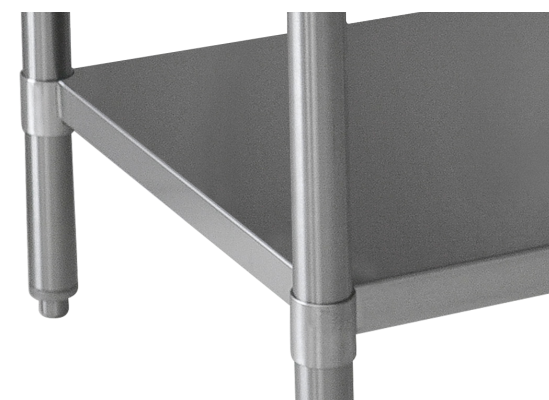
STANDARD FEATURES

- Stainless steel adjustable undershelf and legs
- Stronger and welded corners
- 18 gauge, 430 stainless steel
- Stainless steel bulletfeet
- 3" side size including the rim

OPTIONAL ACCESSORIES

- Set of swivel casters
- Extra stainless steel undershelf
- Drawers
- Braces

Model	L	W	H	Max Load
DSTAND-2424-SS	24"	24"	22"	485 lbs
DSTAND-3018-SS	18"	30"	22"	440 lbs
DSTAND-3024-SS	24"	30"	22"	485 lbs
DSTAND-3030-SS	30"	30"	22"	550 lbs
DSTAND-3036-SS	36"	30"	22"	550 lbs
DSTAND-3048-SS	48"	30"	22"	550 lbs



EQUIPMENT STAND WITH STAINLESS STEEL TOP AND LEGS, WITH GALVANIZED STEEL UNDERSHELF (DSTAND-GS)



STANDARD FEATURES

- Galvanized steel undershelf and legs
- Stronger and non-welded corners
- 18 gauge, 430 stainless steel
- Plastic bulletfeet
- 3" side size including the rim

OPTIONAL ACCESSORIES

- Set of swivel casters
- Extra galvanized steel undershelf
- Drawers
- Braces

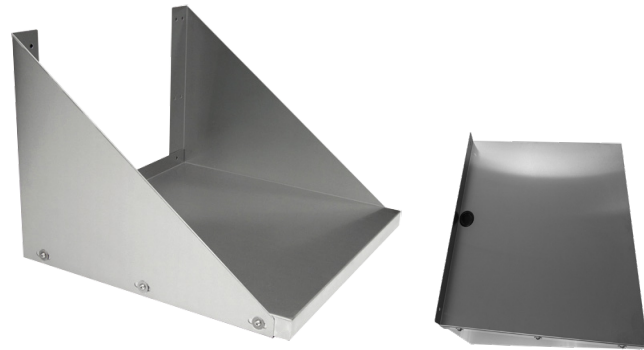
Model	L	W	H	Max Load
DSTAND-2412-GS	12"	24"	22"	275 lbs
DSTAND-2415-GS	15"	24"	22"	290 lbs
DSTAND-2418-GS	18"	24"	22"	310 lbs
DSTAND-2424-GS	24"	24"	22"	330 lbs
DSTAND-2430-GS	30"	24"	22"	350 lbs
DSTAND-2436-GS	36"	24"	22"	375 lbs
DSTAND-2448-GS	48"	24"	22"	400 lbs
DSTAND-2460-GS	60"	24"	22"	425 lbs
DSTAND-2472-GS	72"	24"	22"	450 lbs
DSTAND-3012-GS	12"	30"	22"	300 lbs
DSTAND-3015-GS	15"	30"	22"	325 lbs
DSTAND-3018-GS	18"	30"	22"	350 lbs
DSTAND-3024-GS	24"	30"	22"	375 lbs
DSTAND-3030-GS	30"	30"	22"	400 lbs
DSTAND-3036-GS	36"	30"	22"	425 lbs
DSTAND-3048-GS	48"	30"	22"	450 lbs
DSTAND-3060-GS	60"	30"	22"	475 lbs
DSTAND-3072-GS	72"	30"	22"	500 lbs

DRAWERS (TDRS/TDRD)



TDRD-3018-SS

STAINLESS STEEL MICROWAVE SHELF (TMWS-SS)



STANDARD FEATURES

- Made with 22 gauge, 430 stainless steel
- Universal drawers that can fit on any 24" and 30" deep Thorinox stainless steel table
- Heavy duty drawer brackets
- Easy to install

Model	D*	W**	H	Max Load
TDRS-2418-SS	24"	18"	6"	22 lbs
TDRS-2424-SS	24"	24"	6"	22 lbs
TDRS-3018-SS	30"	18"	6"	22 lbs
TDRS-3024-SS	30"	24"	6"	22 lbs
TDRD-2418-SS	24"	18"	6"	44 lbs
TDRD-3018-SS	30"	18"	6"	44 lbs

*Drawer depth without braces
**Fits table depth of

STANDARD FEATURES

- Made with 18 gauge, 430 stainless steel
- Reversible angles
- Can support up to 60 lbs
- Hole for wires with rubber ring standard

Model	L	W
TMWS-2418-SS	18"	24"
TMWS-2424-SS	24"	24"

STAINLESS STEEL KNOCKDOWN CABINET



TKCA-BK



TKCA-SS

CABINET WITH DRAWERS (TCAD)



STANDARD FEATURES

- Made with 18 gauge, 430 stainless steel
- Adjustable interior stainless steel shelf included
- Delivered knocked down (TKCA models)
- Delivered assembled (TCAD models)
- 5" backsplash on TKCA-BK models

OPTIONAL ACCESSORIES

- Set of swivel casters

Model	L	W	H*	Top Max Load
TKCA-3048-SS	48"	30"	34"	88 lbs
TKCA-3060-SS	60"	30"	34"	60 lbs
TKCA-3072-SS	72"	30"	34"	55 lbs
TKCA-3048-BK	48"	30"	34"	88 lbs
TKCA-3060-BK	60"	30"	34"	66 lbs
TKCA-3072-BK	72"	30"	34"	55 lbs
TCAD-2436-SS	36"	24"	34"	88 lbs
TCAD-2448-SS	48"	24"	34"	88 lbs
TCAD-3048-SS	48"	30"	34"	88 lbs
TCAD-3060-SS	60"	30"	34"	88 lbs

*Height includes 5" legs, does not include 5" backsplash

OVEN STAND (TOS-SS)



STANDARD FEATURES

- Ideal for 24" to 40" wide ovens
- Integrated pan rack
- 5" casters standard

Model	L	W	H
TOS-3235-SS	32"	29"	35"
TOS-3935-SS	39"	34"	35"
TOS-3925-SS	39"	34"	25"



STAINLESS STEEL WALL CABINET (TWCA-SS)

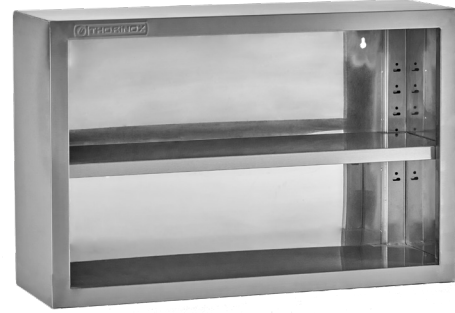


STANDARD FEATURES

- Made with 22 gauge, 430 stainless steel
- Delivered assembled
- Adjustable stainless steel middle shelf
- Lock standard

Model	L	W	H	Shelf Max Load
TWCA-1224-SS	24"	12"	24"	22 lbs
TWCA-1236-SS	36"	12"	24"	22 lbs
TWCA-1248-SS	48"	12"	24"	22 lbs
TWCA-1260-SS	60"	12"	24"	22 lbs
TWCA-1424-SS	24"	14"	24"	22 lbs
TWCA-1436-SS	36"	14"	24"	22 lbs
TWCA-1448-SS	48"	14"	24"	22 lbs
TWCA-1460-SS	60"	14"	24"	22 lbs

STAINLESS STEEL OPEN WALL CABINET (TWCO-SS)



STANDARD FEATURES

- Made with 22 gauge, 430 stainless steel
- Delivered assembled
- Adjustable stainless steel middle shelf

Model	L	W	H	Shelf Max Load
TWCO-1236-SS	36"	12"	24"	22 lbs
TWCO-1248-SS	48"	12"	24"	22 lbs
TWCO-1436-SS	36"	14"	24"	22 lbs
TWCO-1448-SS	48"	14"	24"	22 lbs

STANDARD FEATURES

- Made with 18 gauge, 430 stainless steel
- Delivered knocked down
- Adjustable middle shelf
- Optional: casters

Model	L	W	H	Shelf Max Load
TKOC-1536-SS	36"	15"	34"	55 lbs
TKOC-1548-SS	48"	15"	34"	55 lbs
TKOC-1560-SS	60"	15"	34"	44 lbs
TKOC-1572-SS	72"	15"	34"	33 lbs
TKOC-1836-SS	36"	18"	34"	55 lbs
TKOC-1848-SS	48"	18"	34"	55 lbs
TKOC-1860-SS	60"	18"	34"	44 lbs
TKOC-1872-SS	72"	18"	34"	33 lbs

STAINLESS STEEL WALL MOUNT SHELF (TWSS-SS)



STANDARD FEATURES

- Made with 18 gauge, 430 stainless steel
- Vibration insulation

Model	L	W	Max Load
TWSS-1224-SS	24"	12"	55 lbs
TWSS-1230-SS	30"	12"	55 lbs
TWSS-1236-SS	36"	12"	66 lbs
TWSS-1248-SS	48"	12"	99 lbs
TWSS-1260-SS	60"	12"	110 lbs
TWSS-1272-SS	72"	12"	99 lbs
TWSS-1284-SS	84"	12"	99 lbs
TWSS-1296-SS	96"	12"	110 lbs
TWSS-1424-SS	24"	14"	55 lbs
TWSS-1430-SS	30"	14"	55 lbs
TWSS-1436-SS	36"	14"	66 lbs
TWSS-1448-SS	48"	14"	99 lbs
TWSS-1460-SS	60"	14"	110 lbs
TWSS-1472-SS	72"	14"	99 lbs
TWSS-1484-SS	84"	14"	99 lbs
TWSS-1496-SS	96"	14"	110 lbs
TWSS-1636-SS	36"	16"	66 lbs
TWSS-1648-SS	48"	16"	99 lbs
TWSS-1660-SS	60"	16"	110 lbs
TWSS-1672-SS	72"	16"	99 lbs
TWSS-1684-SS	84"	16"	99 lbs
TWSS-1696-SS	96"	16"	110 lbs

"PASS THRU" OVERSHELF WITH ADJUSTABLE MIDDLE SHELF (TDOS-SS)



STANDARD FEATURES

- Made with 18 gauge, 430 stainless steel
- Easy to assemble
- Adjustable middle shelf
- Optional: additional shelf

Model	L	W	H	Max Load Top/Bottom
TDOS-1236-SS	36"	12"	28.5"	22 / 22 lbs
TDOS-1248-SS	48"	12"	28.5"	22 / 22 lbs
TDOS-1260-SS	60"	12"	28.5"	17 / 17 lbs
TDOS-1272-SS	72"	12"	28.5"	13 / 13 lbs
TDOS-1284-SS	84"	12"	28.5"	33 / 33 lbs
TDOS-1296-SS	96"	12"	28.5"	33 / 33 lbs
TDOS-1436-SS	36"	14"	28.5"	22 / 22 lbs
TDOS-1448-SS	48"	14"	28.5"	22 / 22 lbs
TDOS-1460-SS	60"	14"	28.5"	17 / 17 lbs
TDOS-1472-SS	72"	14"	28.5"	13 / 13 lbs
TDOS-1484-SS	84"	14"	28.5"	33 / 33 lbs
TDOS-1496-SS	96"	14"	28.5"	33 / 33 lbs
TDOS-1636-SS	36"	16"	28.5"	22 / 22 lbs
TDOS-1648-SS	48"	16"	28.5"	22 / 22 lbs
TDOS-1660-SS	60"	16"	28.5"	17 / 17 lbs
TDOS-1672-SS	72"	16"	28.5"	13 / 13 lbs

OPEN STORAGE CABINET (TKOC-SS)

